

# PLAYBILL

## the NETHER

by Jennifer Haley

Directed by **ELYSE EDELMAN**

**Jan 12 - Feb 2, 2025**

— *Previews* —

**Jan 10 & 11**

**RTW** *renaissance*  
THEATERWORKS





UNITED PERFORMING ARTS FUND

*If you're for*  
**FUN!**  
*the arts are for you.*

**AND WE'RE FOR THE ARTS!**

Your gift to UPAF helps dozens of local arts organizations bring the magic of music, dance and theater to life across Southeastern Wisconsin.



**GIVE TODAY & EARN  
EXCITING DISCOUNTS  
FOR YOUR SUPPORT!  
[UPAF.ORG/DONATE](https://UPAF.ORG/DONATE)**





presents

the

# NETHER

by Jennifer Haley

**JANUARY 12 – FEBRUARY 2, 2025**

*Previews January 10 & 11*

Directed by  
**ELYSE EDELMAN**

Production & Stage  
Manager  
**BAILEY WEGNER\***

Asst. Stage Manager  
**SYDNEY SMITH**

Technical Director  
**TONY LYONS**

Scenic Design  
**DOUG DION**

Lighting Design  
**COLIN GAWRONSKI**

Sound Design  
**BRANDON REED~**

Props Design  
**MADELYN YEE**

Costume Design  
**KARIN KOPISCHKE~**

Wardrobe Supervisor  
**SHELBY KAISHIAN**

Intimacy Director  
**KAILEE EVANS**

Intimacy Fellow  
**VICTORIA HUDZIAK**

Deck Management  
**MARY BRENNAN**

Master Electrician  
**KATIE ANDERSON**

Board Operator  
**FAITH LENSMTIH**

Scenery Construction  
**TONY LYONS,  
TIMOTHY LINN**

Scenic Painting  
**AMANDA MARSALA,  
CAROLINE DISCHELL**

House Managers

**KAYLENE HOWARD, ARIANA MANGHERA, CAROLINE NORTON, AUDWIN SHORT,  
BARBARA SLAGTER, ELISE SPARKS, MATTHEW TORKILSEN**

*\*Member of Actors' Equity Association ~ Member of the United Scenic Artists of America*

*Center Theatre Group/Kirk Douglas Theatre, Michael Ritchie, Artistic Director, produced the World Premiere of THE NETHER in Los Angeles, CA in 2013. Development of THE NETHER was supported by the Eugene O'Neill Theater Center during a residency at the National Playwrights Conference 2011, Preston Whiteway, Executive Director, Wendy Goldberg, Artistic Director. Developed at the Lark Play Development Center, NYC. UK premiere first co-produced by Headlong Theatre and the Royal Court Theatre on July 17, 2014 at the Royal Court and was subsequently transferred to the West End by Sonia Friedman Productions and Scott M Delman in association with Tulchin Bartner Productions, Lee Dean & Charles Diamond, 1001 Nights, JFL Theatricals/GHF Productions, Scott & Brian Zeilinger / James Lefkowitz. The West End premiere took place on February 24, 2015 at the Duke of York's Theatre, London. New York Premiere at the MCC Theater February 24, 2015, Artistic Directors: Robert LuPone, Bernard Telsey, & William Cantler Executive Director: Blake West.*

**SEASON SPONSORS** Laura & Mike Arnow,

Jan Serr & John Shanon, Herzfeld Foundation, Shubert Foundation,  
Bert L & Patricia S. Steigleder Charitable Trust

**SHOW SPONSOR**

J. Michael Reavis



**TIME/PLACE**

Soon. An interrogation room and the Hideaway.

*THIS PLAY WILL RUN APPROXIMATELY 90 MINUTES WITH NO INTERMISSION.*

**CAST**

Sims/Papa ..... Steve Koehler\*

Morris ..... Laura Gray\*

Doyle ..... C. Michael Wright\*

Woodnut ..... Dimonte Henning\*

Iris (1/10, 1/12, 1/16, 1/18, 1/22, 1/24, 1/26, 1/30, 2/1) ..... Josie Van Slyke

Iris (1/11, 1/15, 1/17, 1/19, 1/23, 1/25, 1/29, 1/31, 2/2) ..... Zoah Hirano

**UNDERSTUDIES**

*Understudies never substitute for a listed player unless an announcement is made at the beginning of the play.*

u/s Sims/Papa ..... Bill Watson

u/s Morris ..... Maya Danks

u/s Doyle ..... Mark Corkins

u/s Woodnut ..... Jake Badowski

*\*Member of Actors' Equity Association*

**SPECIAL THANKS**

Adam Hastings, Valerie Jencks, A.J. Magoon, Shayne Patrick, Georgie Pink, Nate Schardin, Nate Stuber, American Players Theatre, Spotlight Construction Co.

**PROUD MEMBER**



Follow us on Social Media!

Renaissance Theaterworks    renaissance.theaterworks    @renaissancetheaterworks    rtwmke.bsky.social

## DIRECTOR'S NOTES

What is the relationship between imagination and action? How do we reconsider morality in a world where virtual reality blurs the lines between right and wrong? What role do we play in shaping the ethical standards of virtual environments?

Jennifer Haley's *The Nether* invites us to confront these questions, asking us not for easy answers, but for our willingness to wrestle with the uncomfortable. And while some might see the play as a cautionary tale, I believe virtual reality is ultimately what we make of it.

As a director, I was drawn to this story for its ability to reflect our rapidly evolving technological moment, where AI generation is developing faster than we can regulate it. In my research, some of the most meaningful insights came from exploring platforms like VR Chat and films such as HBO's documentary *We Met in Virtual Reality*. These experiences opened my eyes to the unique connections people can form in virtual realms—connections they might never be able to form offline. During the pandemic, long-distance couples used virtual spaces to sit together, hold hands, and kiss when travel restrictions kept them apart. Virtual dance classes allowed people to express themselves through self-selected avatars and bodies, giving them the freedom to explore movement in ways they might not have been able to in offline spaces, whether due to differences in ability or discomfort. Family hangouts in virtual realms allowed hearing and non-hearing communities to bridge communication gaps.

At the same time, Haley's play doesn't shy away from the darker implications of these spaces. Through this production, I hope to offer a fair exploration of both the light and the dark of these digital environments, reflected both in stark and intoxicating design and in painful and beautiful relationships.

— Elyse Edelman



the  
**NETHER**  
by Jennifer Haley  
directed by  
Elyse Edelman

Scan the QR code and select the Audience Resources tab to access digital versions of

- Audience Guide
- Sensory Guide
- Accessibility Guide
- Digital Playbill



## FOR YOUR INFORMATION

**HEALTH SAFETY:** With the prevalence of COVID-19, flu and other viruses, we support and encourage your personal decision to wear a mask. If you feel unwell, please opt to stay home. RTW will handle health-related cancellations on a case-by-case basis.

**FOOD & BEVERAGE:** Drinks may be taken into the theatre, but food is not permitted.

**ENTERING & EXITING THE THEATER SPACE:** Please use walkways to access the seating areas and refrain from crossing over the stage.

**CANCELLATION POLICY:** Renaissance Theaterworks does not cancel performances due to inclement weather, nor do we offer refunds due to weather.

**LATECOMER POLICY:** Latecomers will not be seated until an appropriate time in the performance. Seating may not be permitted 30 minutes after the start of a performance. If you are running late, please call the Ticket Office at 414-278-0765.

**HEARING LOOP LISTENING SYSTEM:** The theater is equipped with an advanced technology Hearing Loop listening system. The system will broadcast directly to those with T-coil hearing aids. Portable assistive listening devices for conventional listening are available and may be checked out at the Concessions Counter.

**ELECTRONIC DEVICES:** NO cameras or recording devices of any kind (including smartphones) are allowed to be used in the theater. Please turn off all electronic equipment.

**STUDENT, GROUP, & SENIOR DISCOUNTS:** Please contact the Ticket Office at 414-278-0765.

## AUDIO LOOP INSTRUCTIONS

**T-Coil Listeners:** Simply set your hearing device to the Loop setting and enjoy the show.

**Conventional Listeners:** Check out a receiver and headphone set at the Concessions Counter. The House Manager can instruct you on its use, but here are some simple instructions.

Like a transistor radio, the small box has an off-on and volume knob; turn on and adjust for your comfort level. You will need to be in the seats to receive the Loop signal.

The box works directionally; that is, it matters which way it is pointing.

- In most of our seating, the box works best when held up straight, with the volume knob on top, and the flat back pointing toward the stage.
- In the front rows, you will get the strongest signal with the box laying flat on your leg, with the flat back pointing straight to the floor.

Please ask the House Manager for assistance, if needed. We hope you enjoy the show.

## BIOGRAPHIES



**Jennifer Haley —  
PLAYWRIGHT**

Jennifer won the Susan Smith Blackburn Prize for her play, *THE NETHER*, about ethics in virtual reality. *THE*

*NETHER* premiered with Center Theatre Group at the Kirk Douglas Theatre in Los Angeles and won the Ovation Award for Best New Play. It was produced Off-Broadway by MCC Theater and in London by Headlong Theatre and the Royal Court Theatre, transferring with Sonia Friedman Productions to the West End at the Duke of York Theatre. *THE NETHER* has since been produced in 28 countries and translated into 19 languages. Other plays include *NEIGHBORHOOD 3: REQUISITION OF DOOM*, a suburban horror story video game, *FROGGY*, a media-driven thriller, and *BREADCRUMBS*, a fairy tale about dementia. Jennifer has developed work at the Humana Festival of New

Plays, The Banff Centre, Sundance Theatre Lab, and the O'Neill Playwrights Conference. For television, she has written on Netflix's *HEMLOCK GROVE* and *MINDHUNTER*. She is an alum of New Dramatists in New York City, founder of The Playwrights Union in Los Angeles, and currently lives in Austin.



**Elyse Edelman —  
DIRECTOR**

Elyse is grateful to work at Renaissance Theaterworks, a true mission-driven company. At RTW, she

directed Sarah Delappe's *THE WOLVES* and appeared in *THE DROWNING GIRLS*, *TOP GIRLS*, and *THE HOW AND THE WHY*. Recent Wisconsin credits include Forward Theater, Chamber Theatre, Children's Theater of Madison, First Stage, *TAP*, *Next Act*, *In Tandem*, American Players Theatre, Milwaukee Rep, and

**MUSIC  
WITH  
MORE**

**CONNECTION**

Performances, insights and so much more.

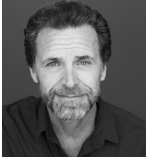
**90.7 FM Milwaukee**

 **WISCONSIN  
PUBLIC RADIO**

[wpr.org/music](http://wpr.org/music)

## BIOGRAPHIES (cont.)

Door Shakespeare. Regionally, she has appeared onstage at The Guthrie Theater, Park Square, People's Center, Mixed Blood, Minnesota Shakespeare Co, Utah Shakespeare Festival, Riverside, among others. Elyse is a proud Advisory Company member at Forward Theater in Madison. Training: UMN/Guthrie Theater Acting BFA. Website: elyseedelman.com.



**Steve Koehler\* —  
SIMS/PAPA**

Steve is thrilled to be making his debut performance with RTW! Best known as "Lloyd" from GUYS ON ICE—a role

he has been performing since 2002; other favorite credits include THE BRIDGES OF MADISON COUNTY (Robert Kincaid) with Peninsula Players; THE SOUND OF MUSIC (Georg Von Trapp) with Skylight Music Theatre; RABBIT HOLE (Howie) with Milwaukee Chamber Theatre and VICTORY FARM (Wolfgang) with Northern Sky. Steve teaches physics and engineering at Pathways High, a UWM charter high school in Milwaukee.



**Laura Gray\* — MORRIS**

Last seen in Forward's LEWISTON/CLARKSTON, Laura is delighted about returning to RTW, where she previously appeared in LUNA

GALE, BARNEY AND BEE and STOP KISS. Over twenty years of Milwaukee credits include Chamber Theatre's CHRISTMAS IN BABYLON, THE GOOD FATHER, CRIMES OF THE HEART and TALLEY'S FOLLY, Next Act's FOUR PLACES, WHAT THE BUTLER SAW and DEAR ESTHER, Milwaukee Rep's NOISES OFF, and roles with First Stage, Optimist, and Milwaukee Shakespeare. In addition to on-camera and voiceover work, Laura is a Theatre Professor at Carroll University and Director of the Standardized Patient Training Program. Love to J, C, and P.



**C. Michael Wright\* —  
DOYLE**

Michael has been acting professionally for the past 48 years. Most recently, he appeared in NO WAKE and

BIRDS OF NORTH AMERICA at Third Avenue PlayWorks. He has acted with countless regional theatres, including the Guthrie Theater, American Players Theatre, Seattle Rep, Berkshire Theatre Festival, Barter Theatre, GeVa Theatre, Milwaukee Rep, StageWest, Madison Rep, Next Act Theatre, Skylight Music Theatre, Milwaukee Chamber Theatre, and many more. When he was much younger, he appeared in Athol Fugard's 'MASTER HAROLD'...AND THE BOYS on Broadway, in Israel and in the National Tour. Michael is also an accomplished director with over 100 productions under his belt. From 2005-2020, he served as Producing Artistic Director of Milwaukee Chamber Theatre.



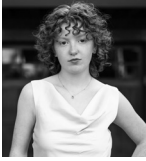
**Dimonte Henning\* —  
WOODNUT**

Dimonte is an actor, director, and theater producer. Some of his favorite directing credits include: ROMEO &

JULIET, THE MOUNTAINTOP, DUTCHMAN, DREAM, QUICKIE! DREAM!, BLACK NATIVITY, THE NICETIES, and PRETTY FIRE. As an actor, some of his favorite regional theater credits include: SEVEN GUITARS, (Cincinnati Playhouse in the Park); TONI STONE (Alliance Theatre); STICK FLY (Writers Theater); KILL MOVE PARADISE (Next Act); THE ISLAND (Milwaukee Chamber Theater); CLYDE'S (Forward Theater Co.); OUR TOWN, A CHRISTMAS CAROL, & DREAMGIRLS (Milwaukee Repertory Theater). Some of Dimonte's TV and commercial credits include: NBC's Chicago PD (Seasons 4&6), Disney's Encore!, UBER WI Lottery, Inpro Designs, and Harley-Davidson.



## BIOGRAPHIES (cont.)



**Josie Van Slyke (she/her)**  
— IRIS

Josephine is over the moon excited to be returning to Renaissance after appearing as #13 in last year's

production of *THE WOLVES*. Some of her other recent credits include *LITTLE WOMEN* (Jo), *A MIDSUMMER NIGHT'S DREAM* (Puck), and *ESCAPE FROM PELIGRO ISLAND* (Narrator #1) at First Stage. Josephine is a proud member of First Stage's Young Company and a senior at Golda Meir High School. Alongside theater, Josephine enjoys singing, playing guitar, and dancing. She would like to thank her family and friends for always believing in her. To X <3 @jOsie\_vanslyke on Instagram.



**Zoah Hirano — IRIS**

Zoah is excited to make her Renaissance Theaterworks debut with *THE NETHER*. She is a sophomore at Shorewood High School and

a second year in First Stage's Young Company. In her spare time she takes voice lessons and plays the violin. Credits include *CHITTY CHITTY BANG BANG*, *THE BEST CHRISTMAS PAGEANT EVER: THE MUSICAL*, and *ELEPHANT AND PIGGIE'S "WE ARE IN A PLAY"* at First Stage; *TITANIC THE MUSICAL* and *A CHRISTMAS CAROL* at Milwaukee Rep. She would like to thank her friends, family, and Renaissance Theaterworks for this opportunity.



**Bill Watson — U/S SIMS/PAPA**

Acting Credits - Milwaukee: The Milwaukee Rep, Milwaukee Chamber Theatre, In Tandem Theatre,

First Stage children's theater. Nationally: Shakespeare and Company in Massachusetts, Seattle Repertory Theatre, Intiman Theatre, The Empty Space, Seattle Children's Theatre A Contemporary Theatre; The State Theatre and

Live Oak Theatre of Austin Texas, Axis Theatre Ireland, Colorado Shakespeare Festival, Montana Shakespeare In The Parks, Montana Repertory Theatre. As a teacher and director Bill has taught on faculties of the Universities of Texas, Montana, and Idaho, before coming to Milwaukee in 2004 to initiate a new undergraduate BFA acting program at UWM. In 2013 Bill, Nancy Smith-Watson and Jim Tasse co-founded *FEAST OF CRISPIAN: SHAKESPEARE WITH VETERANS*. [feastofcrispian.org](http://feastofcrispian.org)



**Maya Danks (she/her)**  
— U/S MORRIS

Maya studied theatre at the University of Minnesota, and now works as an actor, playwright, and director in

Milwaukee. This year you may have seen her onstage in *MY NAME IS RACHEL CORRIE* (Rachel) with Vanguard Productions; *A MIDSUMMER NIGHT'S DREAM* (Helena, Snout, Egeus) with Summit Players Theatre; and *L'APPARTEMENT* (understudy Meg) with Renaissance Theaterworks. When not performing, Maya writes adaptations of classical plays. She would like to thank Jaimelyn for introducing me to this play that has come to mean so much to me, and Elyse for including me in the process of this production. [www.mayadanks.com](http://www.mayadanks.com)



**Mark Corkins — U/S DOYLE**

Mark is a longtime member of the local theatre community. He's had the opportunity to work with Next Act, Chamber Theatre,

First Stage, Madison Rep, Optimist, In Tandem, Milwaukee Opera, Door Shakespeare, American Players Theatre, and Milwaukee Rep. Over many seasons with the Rep, a few favorite productions include: *MUCH ADO ABOUT NOTHING*, *THE CHERRY ORCHARD*, *SEASCAPE*, *TRUE WEST*, *END GAME*, *KING*

## BIOGRAPHIES (cont.)

LEAR, and A CHRISTMAS CAROL. Further a field, Mark has also been privileged to work with Berkeley Rep, Arena Stage, Berkshire Theatre Festival, SITI Company, and the Suzuki Company of Toga.



### **Jake Badowski — U/S WOODNUT**

Jake is excited to be joining Renaissance Theaterworks in their Escape the Ordinary Season and to be part of

THE NETHER! After graduating from the University of Minnesota and attending the Gaiety School of Acting in Dublin, Jake enthusiastically returns to his hometown of Milwaukee, continuing to perform and create meaningful stories with other incredible art-makers. Some of Jake's previous credits include A MIDSUMMER NIGHT'S DREAM, THE GOOD DOCTOR, THE HOBBIT, SHE KILLS MONSTERS, THE WINTER'S TALE, SKIN OF OUR TEETH, and ANTIGONE. Thank you for supporting the necessity that is the arts and Renaissance Theaterworks, this season and always!

### **Mary Brennan (she/her) — DECK MANAGEMENT**

Mary recently moved to Milwaukee to work as the ASM for the Milwaukee Ballet. She is excited to join the team at Renaissance Theaterworks for The Nether. Mary has worked all over the country and is excited to be back in the Midwest. Recent Credits include: ASM for THE NUTCRACKER and CASANOVA at Milwaukee Ballet; Production Stage Manager of the World Premiere Regional Tour of BE REAL MACY WEEVER with Cape Fear Regional Theatre. Instagram: marythesm



### **Doug Dion — SCENIC DESIGNER**

Doug is delighted to return to Renaissance with THE NETHER, after making his Milwaukee scenic design

debut with THE WOLVES last winter! He lives and works in Spring Green Wisconsin at American Players Theater, where he has been since 2017 working as the Assistant Technical Director, but this season he was promoted to Technical Director! Previously he has worked at The Palace Theater in NH, Emporia State University in KS, and The Montana Repertory Theater in MT. Doug lives in Spring Green with his lovely wife Katharine (whom he met at APT) and their spoiled pup Jackaroni.



### **KaiLee Evans — INTIMACY DIRECTOR**

Kailee is a Milwaukee-based educator, intimacy director and actor. She is honored to have contributed to this

production. She loved aiding the cast in the creation of intimate moments through breath and movement. Intimacy Credits include: CLYDES, MOUNTAIN TOP, LAUGHS IN SPANISH (Milwaukee Chamber Theater), MUCH ADO ABOUT NOTHING and DIAL M FOR MURDER (Milwaukee Rep), MACBETH (UWM Peck School of the Arts), and THE MOORS (Renaissance Theaterworks).



### **Colin Gawronski — LIGHTING DESIGN**

Colin is a lighting designer and theatrical technician native to Milwaukee who has worked extensively with

Danceworks, Inc, Milwaukee Chamber Theatre, Sunstone Studios and Black Arts MKE/ Bronzeville. Additional credits include Renaissance Theaterworks, Milwaukee Opera Theatre, Gina Laurenzi Dance Project, and In Tandem Theatre. Colin has also worked with

## BIOGRAPHIES (cont.)

the Sacramento Music Circus, Theatre Lila, Third Avenue Playworks and Forward Theater. Favorite productions include: BOUNDLESS, STEW, THREE OTHER SISTERS, DUTCHMAN, BLACK NATIVITY, /maskə'rād/, SECRETS FROM THE WIDE SKY, DADDY LONG LEGS, THE GLASS MENAGERIE, SERENDIPITY, BIRDS OF NORTH AMERICA, LAMPS FOR MY FAMILY, and VAGABONDARE. Give Love Always.



### **Victoria Hudziak — INTIMACY FELLOW**

Victoria is an Intimacy Director based in southeastern Wisconsin. Victoria is grateful to support

THE NETHER and KaiLee Evans. Past Intimacy Direction includes productions with Chamber Theatre, BlackArts MKE, Forte Theatre, Kith and Kin Theatre Collective, Greendale Community Theatre, Waukesha Civic Theater, Sunset Playhouse, and Kettle Moraine Playhouse. Eternal gratitude to KaiLee and love to Jason. [www.actonconsent.com](http://www.actonconsent.com)



### **Kärin Kopischke~ — COSTUME DESIGN**

Kärin is delighted to design at Renaissance Theatreworks. Kärin received the Joseph

Jefferson Award, AriZoni Award and a Prague Quadrennial nomination for her costume designs. She has designed for regional theatre Tony winners American Conservatory Theater, Chicago Shakespeare, Goodman, Steppenwolf, Utah Shakespeare, Long Wharf, Victory Gardens, Children's Theatre Company, Crossroads, Huntington and Cincinnati Playhouse, as well as the Milwaukee Rep, San Francisco Shakespeare, California Shakespeare and American Players. Kärin taught costume design at DePaul and Northwestern and heads the Lawrence University costume design department. She designed new works for Harry Connick Jr,

Stephen Schwartz, the Pulitzer Prize winning opera SILENT NIGHT, and the world premiere opera THE SHINING at Minnesota Opera. Proud member of U.S.A.A.

### **Tony Lyons — TECHNICAL DIRECTOR**

This season marks Tony's nineteenth year as Technical Director for Renaissance Theaterworks. In all, he has worked in various capacities on over fifty Renaissance productions over the last thirty years. Tony is also technical director for Wild Space Dance Company. Tony has worked for Alverno Presents (R.I.P.), Skylight Music Theatre, Milwaukee Chamber Theatre, and Bialystock & Bloom (R.I.P.). In a parallel universe, Tony is a partner in a small custom carpentry firm.



### **Brandon Reed~ — SOUND DESIGN**

Brandon is happy to be back after designing THE WOLVES. Broadway credits include GOOD NIGHT,

OSCAR at the Belasco Theatre. Regional credits include companies such as Goodman, Lookingglass, PlayMakers Repertory Company, American Players Theatre, Cape Fear Regional Theatre, Barter Theatre, Constellation Stage & Screen, and many more. He was the recipient of the 2019 USITT Robert Cohen Award. He is also the Assistant Professor of Sound Design for Ball State University. MFA: University of Illinois at Urbana-Champaign. BS: Ball State University.

[www.brandonreedsounddesign.com](http://www.brandonreedsounddesign.com)



### **Madelyn Yee — PROPS DESIGN**

Madelyn is a Milwaukee-based freelance scenic and props designer, and is overjoyed to return to RTW

for the first time in three years. Recent scenic credits include BIRDS OF NORTH AMERICA (Third Avenue PlayWorks), ZARZUELA: LUISA

## BIOGRAPHIES (cont.)

FERNANDA (Florentine Opera), THE GIFT OF THE MAGI 2021 (American Players Theatre), BLACK NATIVITY (Black Arts Milwaukee), and scenic and projections for INDECENT (Milwaukee Chamber). During the summer she acts as APT's Associate Scenic Designer. Many thanks to Joe and Poesy.



**Bailey Wegner\* —  
PRODUCTION & STAGE  
MANAGER**

Since 2017 Bailey has filled many off-stage roles at RTW including PM, SM, ASM, CCO, IT (accidental), and some with acronyms that are TBD. Of more than a dozen productions at RTW, highlights include THE WOLVES, WITCH, COST OF LIVING, THE ROOMMATE, PHOTOGRAPH 51, TOP GIRLS, and the Samuel French Off-Off Broadway Festival. A favorite part of the season is the Br!NK New Play Festival, which she has been stage managing for 7 years. Credits for Milwaukee Chamber Theater; INDECENT (SM) and THE FEW (ASM). She holds a BFA in Theater from UW Milwaukee. Outside of the theater, she can be found kayaking and watching films at the Oriental theater.



**Sydney Smith — ASST.  
STAGE MANAGER**

Sydney is thrilled to be returning to Renaissance Theaterworks for THE NETHER! Previously at Renaissance Theaterworks, Sydney was the assistant stage manager for THE WOLVES and COST OF LIVING. Sydney was also the production coordinator for WOMEN OF ROCK, PIANO MEN 2, and COUNTRY SUNSHINE at Milwaukee Repertory Theater. Over the past summer, Sydney traveled to McCall, Idaho to stage manage for the Seven Devils Playwrights Conference where she worked on PLANTATION BLACK and ANTI HERO:

REVENGE OF THE SWIFITES. Sydney sends love to her family, friends, and Tuna for their support.



**Suzan Fete (she/her) —  
ARTISTIC DIRECTOR**

Suzan is a graduate of University of Illinois. Suzan co-founded RTW in 1993.

Favorite RTW projects

include: directing WITCH, TOPDOG/ UNDERDOG, THE SHAPE OF THINGS, BLACKBIRD, TOP GIRLS, and THE ROAD TO MECCA, touring NEAT to Port Elizabeth, South Africa in 2013 and finishing as finalists with ALL OF THE EVERYTHING and LUCKY NUMBERS in the Samuel French Off Off Broadway Short Play Festival, in 2015 and 2019 respectively. Suzan is especially proud that RTW won the prestigious 50/50 in 2020 International Applause Award for the 2015-16 season in recognition of RTW's commitment to women playwrights. Suzan lives happily in Wauwatosa with her husband, Jeff, and emotional support flamingo Barnaby.



**Lisa Rasmussen  
(she/her) — MANAGING  
DIRECTOR**

This season is Lisa's sixteenth at RTW which means she has been serving

the unique mission of "theater by women, for everyone" for more than half of its life! Lisa started as RTW's Development Director in 2008. In December 2017, Lisa was promoted to Managing Director. Since then, she has overseen 15 full productions, five Br!NK New Play Festivals and the move to this beautiful performance space (the most accessible theatre in town). Lisa received her BA in Theater and Psychology from Cardinal Stritch University in 2003. Lisa loves living in Bay View with her husband Jake, daughter Anna and puppy Bjorn.

## RENAISSANCE THEATERWORKS STAFF

|                           |                    |
|---------------------------|--------------------|
| Artistic Director.....    | Suzan Fete         |
| Managing Director.....    | Lisa Rasmussen     |
| Marketing Director.....   | Sarah Kriger Hwang |
| Development Director..... | Dana Dossett       |
| Artistic Associate.....   | Jayne Regan Pink   |
| Marketing Manager.....    | Maria Pretzl       |
| Production Manager.....   | Bailey Wegner      |
| Show Mascot.....          | Ripley Tera Webb   |

## RENAISSANCE THEATERWORKS BOARD OF DIRECTORS 2024-2025

### EXECUTIVE COMMITTEE

Ginny Finn, *President* | Laura Arnow, *Treasurer* | Sofia N. Ascorbe, *Secretary*

### DIRECTORS

|                       |                     |                 |
|-----------------------|---------------------|-----------------|
| Dr. Mary Beth Alvarez | Patti Keating Kahn  | Vivian Moller   |
| George Dionisopoulos  | Dr. Lisa Lipkins    | Jodi Ristau     |
| Susan Frautschi       | Joanne Lipo Zovic   | Jamie Udelhofen |
| Judge Molly Gena      | Michele Matthai     | Beth Weirick    |
|                       | N. Lynnette McNeely |                 |

## ABOUT RENAISSANCE THEATERWORKS

Renaissance Theaterworks (RTW), “Theater by Women for Everyone”, is Milwaukee’s first, women-founded, women-run professional theater company. Dedicated to promoting the work of women onstage and off, RTW creates theater that connects with all people – and what it means to be human – through vibrant, visceral storytelling.

Founded in 1993 by Suzan Fete, Marie Kohler, Raeleen McMillion, Jennifer Rupp and Michele Traband, RTW is the nation’s second oldest theater company with a mission to promote gender parity in theater. RTW produces outstanding, artistically unsurpassed theater that makes audiences feel more, think harder and laugh louder.

RTW is a resident theater company at 255 S. Water Street. Administrative offices remain on the 5th floor of the Broadway Theatre Center.

RTW is a member of the National New Play Network, Playwrights Welcome, Theatre Communications Group, Hispanic Professionals of Greater Milwaukee, Visit Milwaukee, World Premiere Wisconsin, the Historic Third Ward Association and the Milwaukee Theater District. In 2018, Renaissance Theaterworks hosted Statera Con III and supports Statera Arts.

**Office:** 158 N. Broadway 414-273-0800 **Performances:** 255 South Water St.

**Tickets:** [rtwmke.org](http://rtwmke.org) or **Box Office:** 414-278-0765 Mon.-Fri. 12-5pm

Join our email list at [rtwmke.org](http://rtwmke.org) and follow us on social media!

## GREEN ROOM GROUP

Our Green Room Group is an exclusive circle of our major individual donors. They receive special benefits and behind-the-scenes access to the fun and excitement of RTW.

As a Green Room Group member you play a huge role in our mission. Your gift supports gender balance. You enable us to hire the finest actors and directors who bring us extraordinary, sold-out performances. If you appreciate the work we do and want to become a part of it, now is the time to contribute! Contact Dana at [ddossett@rtwmke.org](mailto:ddossett@rtwmke.org) today to learn more.

|                               |                                    |                                  |
|-------------------------------|------------------------------------|----------------------------------|
| Anonymous (3)                 | Kathleen & John Hickey             | Frank Mozer                      |
| George Affeldt                | Sarah & Milt Hwang                 | Kate & Ken Muth                  |
| Dr. Mary Beth Alvarez         | Bonnie & Leon Joseph               | Dr. David Paris & Derin Bjugstad |
| Catherine Anderson            | Patricia Keating Kahn & Chuck Kahn | Lois & Richard Pauls             |
| Patricia & David Anderson     | Brandy Kline & Michael Anderson    | Carmen Periquet                  |
| Laura & Mike Arnow            | Marie Kohler & Brian Mani          | Emily & Angie Phillips           |
| Tanya Atkinson                | Leslie Kohler                      | Mary & Ross Read                 |
| Bob Balderson                 | Mary Korkor                        | J. Michael Reavis                |
| Donna & Donald Baumgartner    | Pam Kriger                         | Susan Riedel                     |
| Liz & Scott Bickley           | Sandra Laedtke                     | Jodi Ristau                      |
| Penny Burton                  | Laura Lindner                      | Anna & Dan Robbins               |
| Miriam Colton & Holly Rehberg | Joanne Lipo Zovic & Paul Zovic     | Jennifer Rupp & Richard Chudnow  |
| Margaret Dethloff & Terri Zeh | Marianne & Sheldon Lubar           | Molly & Jeff Schissler           |
| Judges Jean & John DiMotto    | Sherry & Rick Lundell              | Carol & Kevin Schuele            |
| George & Sandy Dionisopoulos  | Jane Barclay Mandel & Paul Mandel  | Judith & Bob Scott               |
| Patti & Patrick Doughman      | Barbara Manger & Bill Lynch        | Jan Serr & John Shannon          |
| Donna Drosner                 | Donna Martynski                    | Lois Smith                       |
| Sandy Duffy                   | Michele Matthai                    | Patricia & Jerry Styberg         |
| Suzan & Jeff Fete             | Mary Jo & Guy McDonald             | Jamie Udelhofen                  |
| Virginia Finn & Evan Lenhardt | N. Lynnette McNeely                | Julie & David Uihlein            |
| Sarah Ford & Randy Klumb      | Vivian Moller                      | Elizabeth Weirick                |
| Pamela Frautschi              | Lori Morse & Robert Gardenier      | Kim Wynn                         |
| Susan & Timothy Frautschi     | Chris Mortensen                    | Sandra Zingler                   |
| Kathy & Stewart Friend        |                                    | Judy Zwirlein                    |
| Molly Gena                    |                                    |                                  |
| Idy Goodman                   |                                    |                                  |
| Katie Heil                    |                                    |                                  |

## WHAT IS THE GREEN ROOM GROUP?

Green Room Group supporters gain **behind-the scenes** insights on how we harness our artistic and financial resources to create moving theater. Members are also invited to special events like the **First Rehearsal** of each production to hear the cast read the script aloud for the first time and the **Opening Night Reception** to raise a glass with us and mingle with the creative team.

### MEET US IN THE GREEN ROOM!

Contact Dana Dossett, Development Director, at [ddossett@rtwmke.org](mailto:ddossett@rtwmke.org)!

## DONORS

Renaissance Theaterworks thanks the following individuals and organizations for their generous support. Donations listed were received between July 1, 2023 and December 18, 2024. Make a gift today by visiting [rtwmke.org](http://rtwmke.org).

### \$100,000+

United Performing Arts Fund

### \$10,000+

Laura & Mike Arnow

Donna & Donald Baumgartner

Brico Fund

George & Sandy

Dionisopoulos

Suzan & Jeff Fete

Susan & Timothy Frautschi

Greater Milwaukee Foundation

Herzfeld Foundation

Milwaukee County CAMPAC

J. Michael Reavis

Jodi Ristau

Ruth Arts

Shubert Foundation

Bert L. & Patricia S. Steigleder

Charitable Trust

Julie & David Uihlein

Sandra Zingler

### \$5,000+

Anonymous

Bob Balderson

Penny Burton

Chicago Community Trust

Judges Jean & John DiMotto

Ralph Evinrude Foundation

Idy Goodman

Frieda & William Hunt

Memorial Trust

Greater Milwaukee

Foundation's Judith A.

Keyes Family Fund

Marie Kohler & Brian Mani

Marianne & Sheldon Lubar

Sherry & Rick Lundell

Milwaukee Arts Board

Vivian Moller

Jane Bradley Pettit Foundation

Jan Serr & John Shannon

Wisconsin Arts Board

### \$1,000+

Dr. Mary Beth Alvarez

Catherine Anderson

Patricia & David Anderson

Tanya Atkinson

Liz & Scott Bickley

Miriam Colton & Holly Rehberg

Margaret Dethloff & Terri Zeh

Patti & Patrick Doughman

Donna Drosner

Sandy Duffy

Virginia Finn & Evan Lenhardt

Sarah Ford & Randy Klumb

Pamela Frautschi

Kathy & Stewart Friend

Gardner Foundation

Molly Gena

Greater Milwaukee Foundation

Briggs & Stratton Fund

Colton Charitable Fund

Greater Milwaukee Assn. of

Realtors Youth Fnd. Inc

Green Bay Packers Foundation

Heil Family Foundation

Kathleen & John Hickey

Sarah & Milt Hwang

Bonnie & Leon Joseph

Patricia Keating Kahn & Chuck Kahn

Brandy Kline & Michael Anderson

Leslie Kohler

Mary Korkor

Pam Kriger

Sandra Laedtke

LCM Funds Real Estate LLC

Laura Lindner

Joanne Lipo Zovic & Paul

Zovic

Jane Barclay Mandel & Paul Mandel

Barbara Manger & Bill Lynch

Donna Martynski

Michele Matthai

Mary Jo & Guy McDonald

Lori Morse & Robert Gardenier

Chris Mortensen

Frank Mozer

Kate & Ken Muth

Charles D. Orgiesen

Foundation

Dr. David Paris & Derin

Bjugstad

Lois & Richard Pauls

Carmen Periquet

Clare M. Peters Charitable Trust

Emily & Angie Phillips

Phillips Ristau Group at Baird

Anna & Dan Robbins

Mary & Ross Read

Susan Riedel

Jennifer Rupp & Richard Chudnow

Molly & Jeff Schissler

Carol & Kevin Schuele

Judith & Bob Scott

Lois Smith

Patricia & Jerry Styberg

Jamie Udelhofen

We Energies Foundation

Elizabeth Weirick

Wispact Foundation

Kim Wynn

Judy Zwirlein

### \$500+

Erin Anderson

Brenda Andrews & James Cauley

Liz & Tom Aprill

Daniel D. Blinka

Barbara & William Boles

Jason Buskel & Eric Aprill

Catherine & Mario Costantini

Patricia D'Angelo

Mary Jo & Tom Dempsey

Kathie Eilers & Barry Blackwell

Sally & Al Ferguson

Kirsten & Bill Finn

Laura Gordon

Barbara Haig & Daniel Schley

Margarete & David Harvey

Zoe Higgins

Mary & Mark Hollister

Angela Jacobi

Bett Jacquart

Barbara & Dennis Klein

Julilly Kohler

Diane & James Kuntzelman

Joan Lubar & John Crouch

Dr. Lisa Lipkins

Lee Marquardt

## DONORS (cont.)

Sarah McEneaney & Robert Smith  
Mary McCormick & Timothy Hawks  
N. Lynnette McNeely  
Leah Murphy  
Jane O'Connell  
Holly & Gregory Orlowski  
Kari Pietsch-Wangard  
Candy & Bruce Pindyck  
Jeannine Ruby & Salar Saleh  
Pamela Seccombe  
Janine & Bruce Smith  
Linda & Thomas Streifender  
Michael Sullivan  
Joy Towell  
Terry Tuttle & Michael Murphy  
Tracey Wadsworth  
Mary Wegener  
Gwendolyn & William Werner  
Marilyn White  
Joan Wiegand  
**\$50–\$499**  
Actors' Equity Foundation  
George Affeldt  
Libby Amato  
Robert Amsden & Jeanne Williams  
Anonymous (4)  
Sofia Ascorbe  
Philip Backe  
Shauna Singh Baldwin  
Mary & Larry Bandor  
Aliza Baran  
Rebecca Bardwell  
Richard Barthel  
Thomas J Basting Sr  
T. Michael Bathke  
Michael George Bauer  
Brian Bauman  
Cindy Benning  
Marta Bianchini  
Amy Biersteker  
Brooke J Billick  
Sally Blommer  
Amy & Dylan Bolin  
Julie & William Bonnell  
Pamela Booth & Robert Nichols  
Marci Boucher  
Ann Bowe  
Jeanette Braun

Jill Broekhuizen  
Anne Brower & Jane Earle  
Mike Brown  
Diane & David Buck  
Rick Burbey  
Mary Jo Burgoyne  
Linda & Thomas Burke  
Robin & Mick Burns  
Jim Buskel  
Laurie & Peter Byrne  
Sharon & Mark Cameli  
Bruce H Campbell  
Mary Belle & Thomas Chatton  
Jane & Stephen Chernof  
Gladys Chmiel  
Elizabeth Cichowski  
Alexander Coddington  
Mary Jo & John Coffee  
Flora Coker  
Katie Conley  
Marta A Conlon  
Patricia Contreras  
Eleanor & Michael Cotey  
Lori Craig  
Kathleen Allen Crocker  
Christy D'Angelo  
Betsy Daniels  
Linda & Pat Devitt  
Cynthia Dicamelli  
Margaret Dickson  
Elizabeth & Peter Dietz  
Anne DiMotto  
Jennifer Dobby  
Holly Jean Dobson  
Carol Z. Dolphin  
Kathleen Donius & Paul Kosidowski  
Diane & Robert Donohoo  
Dana & Corey Dossett  
Sharon Dossett  
Chip Duncan  
Deborah & Michael Duncan  
Sigrid Dynek  
Connie Eastman  
Tina Eickermann  
Rebecca Elon  
John Emanuel  
Cecile & Dennis Engel  
Cody Estle  
Michael Evans  
Linda Even  
James Ferguson

Barbara McMath & Robert Ferriday, III  
Judy & James Findling  
Mary Alice Fifer  
Keller & Jeff Fitzsimmons  
Kevin Flaherty  
David Flores  
Cheryl Franch  
Patty Francis  
Bette & Richard Frangesch  
Brooke & Craig Frizzell  
Amy & Andrew Funk  
Patricia Gahl & Gregory Polak  
Paula & Ralph Garcia  
Amy L Giampetroni  
Dee Ann Girard  
Natasha Goeller  
Karen Gotwalt & Ronald Reitz  
Stephanie Govin-Matzat  
Sandy & Mark Grady  
Alison Graf  
Will Grant  
Christopher Grenda  
Daryl Grier  
Nancy & Reed Groethe  
Matthew Groth  
Erica Gumieny  
Sheila & Harry Gustafson  
Lyn & Michael Hamilton  
James Hampel  
Amelia Hanks  
Amy Hanson  
Linda Heintz  
Louise Hermsen  
Michelle Herro  
David Hertel  
Mary Hessel  
Cecilia Hillard  
Laura Hirano  
Robert Hirschi  
Mary Beth Holloway  
Susan Holmes  
Victoria Hudziak  
Darryl Huennekens  
Danielle Ippolito  
Cathy Jakicic  
Jacob Janssen  
Kristine Jensen  
Amanda Johnson  
Karen Johnson & James Toth  
Annie Jurczyk  
Carol Justin & Ed Szopinski



## DONORS (cont.)

Diane & Richard Kane  
Maureen Kania  
James Kaplan  
Alyce & Paul Katayama  
Katherine & Vincent Katter  
Judith & William Kay  
Marcella Kearns  
Edward Kelly  
Michele Kenner  
Demaris & Gontran Kenwood  
Kirsten & Andy Kerr  
Donald Kielich  
Maureen Kilmurry  
Richard Knoedler  
Elizabeth Kocol  
Kathi Koenig  
Maureen & Daniel Konkol  
Anne Marie & Terry Krueger  
Konrad Kuchenbach  
Frances Kulutbanis  
Harvey Kurtz & Yvonne Larme  
Charmaine & James LaBelle  
Dr. Katy LaFond  
Dannette & Avrum Lank  
Jennifer LaPorte  
Kersten Larson  
Emily Leick  
Sally Lemke  
Sheri & Lloyd Levin  
Sue & Greg Lochen  
Pat Lombardo  
Lynn Lucius & Richard Taylor  
James Lyon  
Nicole Magnusson  
A.J. Magoon  
Lois Malawsky  
Tara Mallen  
Norman & Sherry Malmon  
Judy Martel  
Dr. Lisa Wehr-Maves & Dr.  
Matthew Maves  
Maureen Mcavoy  
Melissa McCord  
LaVerne McCoy  
Renee McCutcheon  
Elaine McDermott  
Mallory McGinty  
Raeleen McMillion  
Cara McMullin  
Debra Melvin  
Sara & Howard Miller  
Wendy Moeller  
Pat & Gary Moldenhauer  
Patricia & Mark Monroe  
James Moore  
Patricia J Moren  
Lisa Mosier & Michael  
Krukowski  
Andrew Muriuki  
Theresa & Bob Muselman  
Nick Narcisi  
Ann Navin  
Donna Neal  
Cathy Nemerovski  
Linda Neubauer  
Jane Nicholson  
Marjorie Nixon  
Christine & James O'Brien  
Sarah Oberhofer  
John Oberwetter  
Jake Oelke  
Kathy & Alan Olsen  
Joyce & Nick Pabst  
Marge Palleon  
Gerry Pas  
Pam Percy  
John Peters  
Janet & Randy Peterson  
Tammy Peyton  
Sara Pforr  
Marjorie Piechowski  
Devon & John Pittman  
Marianne Plaisier & Gordan  
Mortensen  
Kathryn Podmokly  
Susan Potter  
Teresa & Michael Prattke  
Kayla Premeau  
Amanda & Nate Press  
Lynn Preston  
Ellen Purtell  
Amy Rabideau Silvers & Joe  
Silvers  
Christine Radiske & Herbert  
Quigley  
Jacqueline Rice  
Lynn Rix  
Carla Roden  
Linda Roethlisberger & Dennis  
Hennessey  
Jinnene Ross  
Susan Sager  
LindaGale Sampson  
Lynne Schade  
Susan & Michael Schall  
Robert Schellhammer &  
Maureen Holt  
Alex Scheurell  
Patrick Schley  
Ted Schulte  
Brooke Schultz  
Rebecca Schultz  
Yvonne Schultz  
Ellen Frieberg Schupper  
Micki Seinfeld  
Pam Shy  
Leonard Sobczak  
Dr. Morton Soifer  
Deborah Staples & David  
Cecsarini  
Shayne P Steliga  
Linda Stephens  
Eileen & George Stone  
Kimberly Stoner & Cory Krivitz  
Sandra Strawn  
Chase Stoeger  
Anne & Gary Summers  
Tara Swartz  
Carolyn Sweers  
Julie Swenson  
Virginia & John Taucher  
Francesca Tenuta  
Cari Thompson & Tim Falvey  
Tawnie Thompson  
Linda Timm  
Josie Trettin  
Beck Trumbull  
Sheryl Van Haren  
Susan Vetrovsky & Michael  
Goldstone  
Douglas Visvader  
Julia Vosper  
Yvonne Wagner  
Judge Jeff & Dyan Wagner  
Donna & Jerry Walsh  
Jenny Wanasek & Mark  
Weinberg  
Barbara Wanless  
Margaret & John Ward  
Catherine Washabaugh  
Susan E. Watson  
Phyllis Wax  
Dean Wegner  
Alyce & Russell Weiss  
Marie Weiss  
Dawn Wenzell

## DONORS (cont.)

Nathan Wesselowski  
Heather Whitmill  
Margaret Wilber  
Lani Williams & Earl Potter  
Maxine Wishner  
Sarah Wong  
Michael Wright & Ray Jivoff  
Christine Yundem  
David Zalewski  
Katrene Zelenovskiy

### IN-KIND DONORS

A Bianchini Experience  
Catering  
Bars & Recreation  
Bartolotta Restaurants  
Cooper's Hawk  
Florentine Opera Company  
Sarah & Milt Hwang  
Herb Kohl Philanthropies  
Milwaukee Ballet  
Milwaukee Chamber Theatre  
Milwaukee Symphony  
Orchestra

Next Act Theatre  
Jayne & Michael Pink  
Potawatomi Hotel & Casino  
Saffron  
Saint Kate  
Skylight Music Theatre  
Sophia Angela Topetzes  
Strelka  
Traveling Lemur Productions,  
LLC  
Julia & David Uihlein

## ABOUT UPAF

Each year, more than 30,000 individuals, corporations and foundations in greater Milwaukee annually support the UPAF annual campaign, making it one of the nation's largest united arts funds. In addition to raising and allocating operating funds, UPAF is enhancing its value to the community, donors and performing arts by serving as a community wide resource for developing the excellence, reputation and impact of our performing arts.



### Established to recognize those who have made an estate or planned gift to Renaissance Theaterworks, Inc.

Your forethought will ensure long-term viability for RTW's unique mission, as well as the continuation of our uninterrupted debt-free history.

Legacy gifts can be made through bequests, life insurance, IRAs or other planned giving arrangements.

Have you already included Renaissance Theaterworks in your planning?

Please let us know!

### Join Now!

Interested in learning more?  
Contact Dana Dossett, Development Director at [ddossett@rtwmke.org](mailto:ddossett@rtwmke.org)



# THE CHILDREN

BY LUCY KIRKWOOD  
DIRECTED BY MARIE KOHLER

SCAN WITH  
YOUR PHONE  
FOR TICKETS!



FEB 12 - MAR 9, 2025

NEXTACT.ORG | (414) 278-0765 | 255 S WATER ST, MKE



UP NEXT AT



renaissance  
THEATERWORKS

by Jonathan Tolins

# Buyer & Cellar

Directed by **Ray Jivoff**  
Featuring **Doug Clemons**

**Mar 23 - Apr 13, 2025**

— *Previews* —  
**Mar 21 & 22**

Co-produced with  
**THIRD AVENUE  
PLAYWORKS**