

# PLAYBILL

by Jonathan Tolins

# Buyer & Cellar

Directed by **Ray Jivoff**  
Featuring **Doug Clemons**

**Mar 23 - Apr 13, 2025**

— *Previews* —  
**Mar 21 & 22**

Co-produced with  
**THIRD AVENUE  
PLAYWORKS**



*renaissance*  
**THEATERWORKS**



UNITED PERFORMING ARTS FUND

*If you're for*  
**FUN**  
*the arts are for you.*

**AND WE'RE FOR THE ARTS!**

Your gift to UPAF helps dozens of local arts organizations bring the magic of music, dance and theater to life across Southeastern Wisconsin.



**GIVE TODAY & EARN  
EXCITING DISCOUNTS  
FOR YOUR SUPPORT!  
UPAF.ORG/DONATE**



**DO YOU...  
LOVE LIVE,  
PROFESSIONAL  
THEATER?  
ARE YOU A...  
PASSIONATE ARTS  
SUPPORTER, WITH  
“FRIEND-RASING” AND  
STORYTELLING SKILLS?**

Renaissance Theaterworks, a 501c3, is looking for people with avid curiosity, who are enthusiastic about the performing arts to serve on our Board of Directors.

Your skills may match up with RTW's leadership needs to propel the organization into a bright future!

**SCAN THIS QR  
CODE TO  
INDICATE  
YOUR  
INTEREST:**





presents

# by Jonathan Tolins Buyer & Cellar

**MARCH 23 – APRIL 13, 2025**

*Preview Performances on March 21 & 22*

Directed by  
**RAY JIVOFF**

Production &  
Stage Manager  
**BAILEY WEGNER\***

Asst. Stage Manager  
**LILLIAN HAYWARD**

Technical Director  
**TONY LYONS**

Lighting Design  
**JIMMY BALISTRERI**

Scenic Design  
**LISA SCHLENKER~**

Associate Scenic Design  
**KYLEE HENNES**

Sound Design  
**BRIAN GRIMM**

Props Design  
**HALEY CRANSTOUN**

Projection Design  
**ANTHONY  
CHURCHILL~**

Costume Design  
**JASON ORLENKO~**

Wardrobe Supervisor  
**SHELBY KAISHIAN**

Master Electrician  
**KATIE ANDERSON**

Board Operator  
**FAITH LENSMTIH**

Scenery Construction  
**TONY LYONS,  
TIMOTHY LINN**

Scenic Painting  
**AMANDA MARSALA,  
CHRISSE PIONTEK**

House Managers  
**KAYLENE HOWARD, ARIANA MANGHERA, CAROLINE NORTON, AUDWIN SHORT,  
BARBARA SLAGTER, ELISE SPARKS, MATTHEW TORKILSEN**

*\*Member of Actors' Equity Association ~ Member of the United Scenic Artists of America*

*Original Off-Broadway Production produced by Darren Bagert, Dan Shaheen and Ted Snowdon*

*World premiere produced by Rattlestick Playwrights Theater (David Van Asselt, Artistic Director; Brian Long, Managing Director)*

**PROUD MEMBER**



**SEASON SPONSORS** Laura & Mike Arnow,

Jan Serr & John Shanon, Herzfeld Foundation, Shubert Foundation,  
Bert L & Patricia S. Steigleder Charitable Trust

**SHOW SPONSOR**

Judges Jean & John DiMotto  
Idy Goodman  
Vivian Moller



**TIME/PLACE**

Now-ish

*This play will run approximately 90 minutes with no intermission.*

**CAST**

Alex More .....Doug Clemons  
u/s Alex More ..... Nate Press

*\*Understudies never substitute for a listed player unless an announcement is made at the beginning of the play.*

**SPECIAL THANKS**

Amilinda, Bat Stitch Crochet, Michael Johnston, Nate Schardin,  
Adam Hastings, Georgie Pink, Spotlight Construction Co.

**MUSIC**  
**WITH**  
**MORE**  
**CONNECTION**

Performances, insights and so much more.

**90.7 FM Milwaukee**

**WISCONSIN**  
PUBLIC RADIO

**wpr.org/music**

## DIRECTOR'S NOTES

I'm grateful to be back in Milwaukee, welcomed by the Renaissance Theaterworks team, who are longtime friends and colleagues. And somehow it seems fitting that I'm here to direct this hysterically funny, bordering on bizarre, gay hallucination of a play. This sharply written one-man show is filled with fascinating, highly emotional, witty characters, all revolving around one of the pivotal artists of the last century, Barbra Streisand.

It's especially fitting for me to be involved here, because Streisand has been a part of my life, for *most* of my life. My family watched her on Ed Sullivan and Jack Paar; my Dad bought her albums. Even at 10 years old, her clarion voice, her power and intelligence, her musicianship and her Jewishness, were spellbinding. So it's been a blast to celebrate and share my enjoyment of her work with the whole production team and now with you, our patrons.

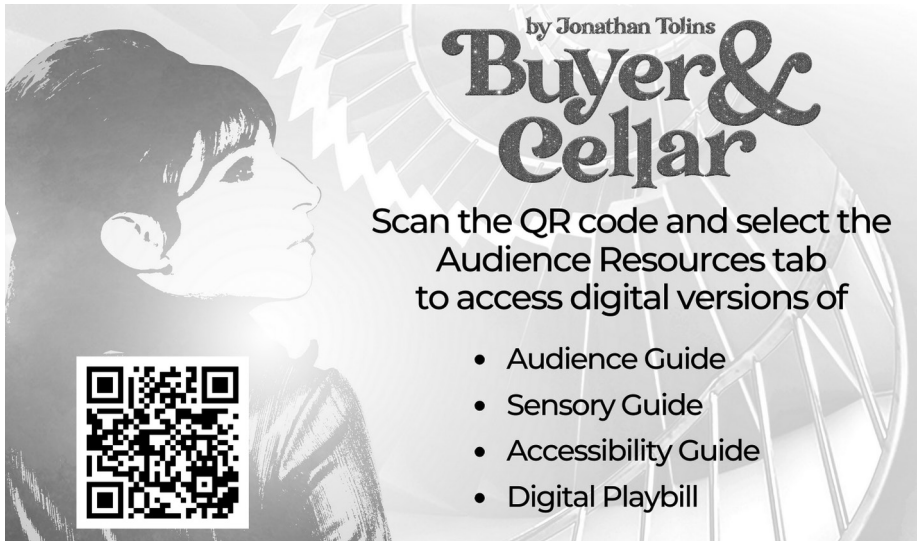
This play walks a fine line between fact and fiction. Here's playwright Jonathan Tolins on the inspiration for his comedy:

"BUYER AND CELLAR began with a joke. In 2010, my husband brought home a copy of the newly published *My Passion for Design* by Barbra Streisand. The two of us flipped through its impeccably art-directed pages in delight and awe. Like many others who stumbled upon this remarkable cultural artifact, we were particularly struck by the shopping mall in Barbra's basement, that street of shops built to store Barbra's vast collections of antiques, costumes and assorted tchotchkes. (Yes, it really does exist.) I said, 'How'd you like to be the guy who works down there?' And thus BUYER & CELLAR was born."

And wisely, to play "the guy who works down there", we cast the brilliantly talented and charismatic Doug Clemons. This guy's great! I've been lucky to work with him before, and knew this show would be a perfect fit for him.

Welcome to the fantastical world of Ms. Streisand, the myth, the mystery, the mishigas!

— Ray Jivoff, Director



by Jonathan Tolins

# Buyer & Cellar

Scan the QR code and select the Audience Resources tab to access digital versions of

- Audience Guide
- Sensory Guide
- Accessibility Guide
- Digital Playbill

## FOR YOUR INFORMATION

**HEALTH SAFETY:** With the prevalence of COVID-19, flu and other viruses, we support and encourage your personal decision to wear a mask. If you feel unwell, please opt to stay home. RTW will handle health-related cancellations on a case-by-case basis.

**FOOD & BEVERAGE:** Drinks may be taken into the theatre, but food is not permitted.

**ENTERING & EXITING THE THEATER SPACE:** Please use walkways to access the seating areas and refrain from crossing over the stage.

**CANCELLATION POLICY:** Renaissance Theaterworks does not cancel performances due to inclement weather, nor do we offer refunds due to weather.

**LATECOMER POLICY:** Latecomers will not be seated until an appropriate time in the performance. Seating may not be permitted 30 minutes after the start of a performance. If you are running late, please call the Ticket Office at 414-278-0765.

**HEARING LOOP LISTENING SYSTEM:** The theater is equipped with an advanced technology Hearing Loop listening system. The system will broadcast directly to those with T-coil hearing aids. Portable assistive listening devices for conventional listening are available and may be checked out at the Concessions Counter.

**ELECTRONIC DEVICES:** NO cameras or recording devices of any kind (including smartphones) are allowed to be used in the theater. Please turn off all electronic equipment.

**STUDENT, GROUP, & SENIOR DISCOUNTS:** Please contact the Ticket Office at 414-278-0765.

## AUDIO LOOP INSTRUCTIONS

**T-Coil Listeners:** Simply set your hearing device to the Loop setting and enjoy the show.

**Conventional Listeners:** Check out a receiver and headphone set at the Concessions Counter. The House Manager can instruct you on its use, but here are some simple instructions.

Like a transistor radio, the small box has an off-on and volume knob; turn on and adjust for your comfort level. You will need to be in the seats to receive the Loop signal.

The box works directionally; that is, it matters which way it is pointing.

- In most of our seating, the box works best when held up straight, with the volume knob on top, and the flat back pointing toward the stage.
- In the front rows, you will get the strongest signal with the box laying flat on your leg, with the flat back pointing straight to the floor.

Please ask the House Manager for assistance, if needed. We hope you enjoy the show.

## BIOGRAPHIES



### **Jonathan Tolins — PLAYWRIGHT**

Jonathan Tolins is the author of *BUYER & CELLAR*, which won the Lucille Lortel Award for Outstanding Solo Show

and was named Best Unique Theatrical Experience by the Off-Broadway Alliance. Other plays include *THE TWILIGHT OF THE GOLDS* (Broadway, Booth Theatre), *IF MEMORY SERVES* (Promenade), *THE LAST SUNDAY IN JUNE* (Rattlestick, Century Center), and *SECRETS OF THE TRADE* (Primary Stages). A collection of his plays has been published by Grove/Atlantic. His film work includes *THE TWILIGHT OF THE GOLDS* and *MARTIAN CHILD*. For television, he was a writer for *QUEER AS FOLK*, The Academy Awards, The Tony Awards, *PARTNERS*, *THE GOOD FIGHT* and *SCHMIGADOON!*. He is a member of the Dramatists Guild and the Writers Guild of America.



### **Ray Jivoff — DIRECTOR**

Ray Jivoff is an actor, director and educator now living in Sturgeon Bay, but is very happy to be back in Milwaukee working with

Renaissance Theaterworks. He was on the staff at Skylight Music Theatre for twenty years, as Education Director then Artistic Director. At Skylight he directed *KISS ME KATE*, *PIPPIN*, *URINETOWN*, *HAIR*, *JACQUES BREL*... and forty school touring shows. Other directing credits include *THE COMPLETE WORKS OF WILLIAM SHAKESPEARE* and *THE SUM OF US* at Milwaukee Chamber Theatre, *ANYTHING GOES*, *LITTLE SHOP OF HORRORS* and *INTO*

*THE WOODS* at Marquette University and *WEST SIDE STORY* at UW Milwaukee. He has been a Barbra Streisand fan since 1962.



### **Doug Clemons — ALEX MORE**

Honored to be part of this dream team & dream show, Doug's been a proud sassy n' brassy Wisconsin actor/director/writer at

Northern Sky Theater, First Stage, Skylight Music Theater, Milwaukee Opera Theatre, The Florentine Opera, Fireside Theater, Forward Theater, Children's Theatre of Madison, Third Avenue PlayWorks and Purse String Productions. Regional/concert credits: NYC Musical Theater Festival, NYC's Cherry Lane Theater, Chicago Musical Theater Festival, Utah Light Opera, Racine Symphony Orchestra, Norwegian Cruise Line and backup for Michael Bubl . Love and thanks to Matt for making everything possible, and to Trevor for introducing/manifesting this play in Doug's life. [DougClemons.com](http://DougClemons.com)



### **Nate Press — U/S ALEX MORE**

Nate is a native Milwaukeean who has worked in theatre as an actor, director, and educator

over the years. He is thrilled to be back with RTW after acting in last season's *Br!NK Br!EFs*, *ROBERTA'S SKIN* (Fred). Other previous favorite credits include *CLYDES* (Jason) with Milwaukee Chamber Theatre, *THE GOOD FATHER* (Tim) and *MOMENT* (Nial) with Milwaukee Irish Arts, *BENT* (Horst) with The

## Follow us on Social Media!



Renaissance Theaterworks



[renaissance.theateworks](http://renaissance.theateworks)



[@renaissancetheaterworks](https://twitter.com/renaissancetheaterworks)



[rtwmke.bsky.social](https://www.youtube.com/channel/UCrtwmke)



## BIOGRAPHIES (cont.)

World's Stage Theatre Co, THE GLASS MENAGERIE (Tom Wingfield) with The Underground Collaborative, DOG SEES GOD (CB) with Splinter Group, THREE DAYS OF RAIN (Ned and Walker Janeway) with Smithereen Productions and more. Enjoy the show!



### **Jimmy Balistreri — LIGHTING DESIGN**

Jimmy is excited to be designing at the Renaissance Theaterworks for the first time! He is a

Wisconsin based lighting designer and stage manager whose recent local design credits include THE FISHERMAN'S DAUGHTERS, REALITY TRIP, and AND IF ELECTED (Northern Sky Theater) and IMBROGLIO (Great River Shakespeare Festival). He recently received his MFA in Lighting Design from UC-Irvine, and his recent California credits include METAMORPHOSES (South Coast Repertory) and AGNES OF GOD (Morgan-Wixson Theatre). He hopes you enjoy the show! Check out more of his work at [jablights.com](http://jablights.com).



### **Anthony Churchill~ — PROJECTION DESIGN**

Anthony Churchill collaborates on media for theatre, events, and installations. Selected work

includes shows with Drury Lane Theatre, Marriott Theatre, Timeline Theatre, Paramount Theatre, DEATH BECOMES HER, FeverUp Productions, Phoenix Theatre, Next Act Theatre, Chicago Opera Theatre, Shakespeare Theatre, Grand Rapids Civic Theatre, the U.S. State Department, Rivendell Theatre, THE CHER SHOW, Q Brothers, and the Museum of Broadcast Communications. Tony has been nominated for nine Jeff Awards for Projections, and awarded two. When not working on media, he enjoys sculpting tiny astronauts in peril, and exploring with his beautiful wife Sara, their son Arlo, and rescue pitbull Douglass. [www.artlabchicago.com](http://www.artlabchicago.com)



### **Haley Cranstoun — PROPS DESIGN**

Her Production Assistant work includes A GIFT OF THE MAGI, NO WAKE, JEEVES SAVES THE DAY,

STONES IN HIS POCKET, (Third Avenue PlayWorks); she also has done work on props for A GIFT OF THE MAGI (Third Avenue PlayWorks) Assistant Production manager (Ball State Department of Theater and Dance 2023-2024).



### **Brian Grimm — SOUND DESIGN**

Brian Grimm is a composer, performer, and sound designer based in Wisconsin. Grimm is known

for their integrated sound design style and work on cello, bass guitar, & Chinese string instruments. Selected Production Credits: A NUMBER (Two Crows Theatre); ALMOST MAINE (Next Act Theatre); KING JAMES, THE FLYING LOVERS OF VITEBSK, THE GARBOLOGISTS (Forward Theater); OAK (Urbanite Theater); THE MAGNOLIA BALLET (About Face Theatre); TWO MILE HOLLOW (Phoenix Theatre); MARY'S WEDDING (Indiana Repertory Theatre); STONES IN HIS POCKETS, I CARRY YOUR HEART WITH ME, BIRDS OF NORTH AMERICA (Third Avenue PlayWorks); @bgcellozone Grimmusik Records: [www.grimmusik.com](http://www.grimmusik.com)



### **Lillian Hayward — ASST. STAGE MANAGER**

This is Lillian Hayward's first show with Renaissance Theaterworks. She will graduate in May with BFA in

Theatre Production and French from the University of Wisconsin- Milwaukee, where she studies to be a stage manager. Highlights at UWM include PERICLES, MACBETH, THE MOORS, LET ME DOWN EASY. Outside of UWM: A DOLL'S HOUSE (Milwaukee Chamber

## BIOGRAPHIES (cont.)

Theater), AN ILIAD (Odd Bird Theatre Company), THE STILL ALARM (Brown Ledge Theatre), RHINOCEROS (The Parish Players). You can catch Lillian next summer in Spring Green, WI, working at American Players Theatre! Big thanks to Ralph and Ella. This is just the beginning.



**Kylee Hennes —  
ASSOCIATE SCENIC  
DESIGN**

KyLee is a theatre performer, set designer, and recent graduate of the College of Architecture at IIT in Chicago. She currently works as Lisa Schlenker's Associate Scenic Designer and has held architectural design internships at Rockwell Group in NYC and Charcoalblue in Chicago. KyLee is the lead scenic designer currently working on THE SECRET GARDEN at Forte Theatre Company in Franklin. She enjoys playing 80s classic rock on her electric guitar in between her time auditioning for Theatre, Film & TV. Ky is dedicated to designing spaces that tell a story, and is excited to delve into the world of Barbra Streisand with you.

**Tony Lyons — TECHNICAL DIRECTOR**

This is Anthony's nineteenth year as Technical Director for Renaissance Theaterworks. In all, he has worked in various capacities on over fifty Renaissance productions over the last thirty years. Anthony is also technical director for Wild Space Dance Company. Anthony has worked for Alverno Presents (R.I.P.), Skylight Music Theatre, Milwaukee Chamber Theatre, and Bialystock & Bloom (R.I.P.). In a parallel universe, Anthony is a partner in a small custom carpentry firm.



**Jason Orlenko™ —  
COSTUME DESIGN**

Jason is delighted to return to Renaissance where he has designed costumes for THE MOORS, THE WOLVES,

COST OF LIVING, PHOTOGRAPH 51, RUSSIAN TRANSPORT, VIOLET HOUR, LETTICE & LOVAGE, and THE UNDERSTUDY. Favorites include XANADU, MAMMA MIA, NEWSIES, KISS ME KATE (Skylight Music Theatre); THE ELABORATE ENTRANCE OF CHAD DEITY, THE MOUSETRAP, SILENT SKY (Next Act). Additional design work includes Milwaukee Rep, Utah Festival Opera & Musical Theatre, Northern Sky, First Stage, Rep of St. Louis, Milwaukee Chamber, Milwaukee Opera Theatre, Forward Theatre, In Tandem Theatre, Cardinal Stage. Other credits include the Hangar Theatre, Illinois Shakespeare Festival, the Florentine Opera, 4 summers at American Players Theatre. Upcoming: A CASE FOR THE EXISTENCE OF GOD at Forward Theatre and CIRCLE MIRROR TRANSFORMATION at Next Act. Jason resides in Milwaukee with his husband Brick, where he is Assistant Professor of Costume Design at UW-Milwaukee. [www.jasonorlenko.com](http://www.jasonorlenko.com)



**Lisa Schlenker™ —  
SCENIC DESIGN**

Ms. Schlenker is delighted to return to the Renaissance Theaterworks family to explore this fascinating view of celebrity. By day, Lisa serves Northern Sky Theater as Resident Designer and Production Manager, telling stories in the north woods of Wisconsin. For over three decades Lisa has devoted passion to advancing skills in prop making, scenic design, and production management. Lisa earned her BA in Music and Theatre from Augustana College and is an alum of the UW Madison MFA program in Theatre Technology. A proud member of the Production Managers Forum, the Society of Prop Managers, and United Scenic Artists Local 829 IATSE, Lisa keeps work interesting through curiosity and a passion for learning. Lisa's book with co-author Sandra Strawn: The Properties Director's Tool Kit is available through Focal Press and on Amazon.com.

## BIOGRAPHIES (cont.)

Recent scene design credits: THE FISHERMAN'S DAUGHTERS, HELL'S BELGIANS, GIRLS ON SAND, REALITY TRIP (Northern Sky); ALMOST MAINE (Next Act); LUMBERJACKS IN LOVE (Milwaukee Rep.); A DOLL'S HOUSE (MCT). Upcoming projects: VIVA LA MAMA (Florentine Opera); ESPERANZA RISING (First Stage).



**Bailey Wegner\* —  
PRODUCTION & STAGE  
MANAGER**

Since 2017 Bailey has filled many off-stage roles at RTW including PM, SM, ASM, CCO, IT (accidental), and some with acronyms that are TBD. Of more than a dozen productions at RTW, highlights include THE WOLVES, WITCH, COST OF LIVING, THE ROOMMATE, PHOTOGRAPH 51, TOP GIRLS, and the Samuel French Off-Off Broadway Festival. A favorite part of the season is the BRINK New Play Festival, which she has been stage managing for 7 years. Credits for Milwaukee Chamber Theater; INDECENT (SM) and THE FEW (ASM). She holds a BFA in Theater from UW Milwaukee. Outside of the theater, she can be found kayaking and watching films at the Oriental theater.



**Suzan Fete (she/her) –  
ARTISTIC DIRECTOR**

Suzan is a graduate of University of Illinois. Suzan co-founded RTW in 1993. Favorite RTW projects include: directing TOPDOG/UNDERDOG, THE SHAPE OF THINGS, BLACKBIRD, TOP GIRLS, and THE ROAD TO MECCA, touring NEAT to Port Elizabeth, South Africa in 2013 and finishing as finalists with ALL OF THE EVERYTHING and LUCKY NUMBERS in the Samuel French Off Off Broadway Short Play Festival, in 2015 and 2019 respectively. Suzan is especially proud that RTW won the prestigious 50/50 in 2020 International

Applause Award for the 2015-16 season in recognition of RTW's commitment to women playwrights. Suzan lives happily in Wauwatosa with her husband, Jeff and her emotional support teacup pig, Tallulah.



**Lisa Rasmussen  
(she/her) – MANAGING  
DIRECTOR**

This season is Lisa's seventeenth at Renaissance Theaterworks (RTW) which means she has been serving the unique mission of "theater by women, for everyone" for more than half of its life! Lisa started as RTW's Development Director in 2008. In December 2017, Lisa was promoted to Managing Director. Over her tenure as Development Director, she orchestrated a 50% increase in RTW's contributed income. Since 2017, she has overseen 16 full productions, five BRINK New Play Festivals and the move to this beautiful performance space (the most accessible theatre in town). Lisa is proud to have helped uphold the unbroken 32-year history of debt-free operation at RTW, it is a team sport! Lisa received her BA in Theater and Psychology from Cardinal Stritch University in 2003. Lisa loves living in Bay View with her husband Jake, daughter Anna and puppy Bjorn.



*tiny astronaut in peril by Anthony Churchill*



**UPCOMING**

**Spring Concert Series**

The Art of Healing

May 3 • May 4

Milwaukee Youth Arts Center

**Variety Show Fundraiser**

Nerds and Dorks and Geeks

May 29

Jan Serr Studio

[www.ourvoicemke.org/events](http://www.ourvoicemke.org/events)

**The Nanny**  
A Fine Parody



Sept/Oct

**BOB'S BURGERS**

Dec/Jan

*The Golden Girls*



**May/June**

Broadway producer Maxwell Sheffield has yet to find a person to fill the role of nanny for his three children, until Fran, a flashy girl from Flushing Queens, shows up selling makeup at his door. Will Fran be the right fit? Her best friend, Val, and her mother, Syvlia, think so- but Fran isn't so certain. She gets along with the butler, Niles, just fine...but it's Mr. Sheffield's business partner, C.C. Babcock, that Fran has to keep an eye on.

## RENAISSANCE THEATERWORKS STAFF

Artistic Director.....	Suzan Fete
Managing Director.....	Lisa Rasmussen
Marketing Director.....	Sarah Kriger Hwang
Development Director.....	Dana Dossett
Artistic Associate.....	Jayne Regan Pink
Marketing Manager.....	Maria Pretzl
Production Manager.....	Bailey Wegner
Show Mascot.....	Roz T. Winsome

## RENAISSANCE THEATERWORKS BOARD OF DIRECTORS 2024-2025

### EXECUTIVE COMMITTEE

Ginny Finn, *President* | Laura Arnow, *Treasurer* | Sofia N. Ascorbe, *Secretary*

### DIRECTORS

George Dionisopoulos  
Susan Frautschi  
Judge Molly Gena  
Patti Keating Kahn

Dr. Lisa Lipkins  
Joanne Lipo Zovic  
Michele Matthai  
N. Lynnette McNeely

Vivian Moller  
Jodi Ristau  
Jamie Udelhofen  
Beth Weirick

## ABOUT RENAISSANCE THEATERWORKS

Renaissance Theaterworks (RTW), “Theater by Women for Everyone”, is Milwaukee’s first, women-founded, women-run professional theater company. Dedicated to promoting the work of women onstage and off, RTW creates theater that connects with all people – and what it means to be human – through vibrant, visceral storytelling.

Founded in 1993 by Suzan Fete, Marie Kohler, Raeleen McMillion, Jennifer Rupp and Michele Traband, RTW is the nation’s second oldest theater company with a mission to promote gender parity in theater. RTW produces outstanding, artistically unsurpassed theater that makes audiences feel more, think harder and laugh louder.

RTW is a resident theater company at 255 S. Water Street. Administrative offices remain on the 5th floor of the Broadway Theatre Center.

RTW is a member of the National New Play Network, Playwrights Welcome, Theatre Communications Group, Hispanic Professionals of Greater Milwaukee, Visit Milwaukee, World Premiere Wisconsin, the Historic Third Ward Association and the Milwaukee Theater District. In 2018, Renaissance Theaterworks hosted Statera Con III and supports Statera Arts.

**Office:** 158 N. Broadway 414-273-0800 **Performances:** 255 South Water St.

**Tickets:** [rtwmke.org](http://rtwmke.org) or **Box Office:** 414-278-0765 Mon.-Fri. 12-5pm

Join our email list at [rtwmke.org](http://rtwmke.org) and follow us on social media!

## GREEN ROOM GROUP

Our Green Room Group is an exclusive circle of our major individual donors. They receive special benefits and behind-the-scenes access to the fun and excitement of RTW.

As a Green Room Group member you play a huge role in our mission. Your gift supports gender balance. You enable us to hire the finest actors and directors who bring us extraordinary, sold-out performances. If you appreciate the work we do and want to become a part of it, now is the time to contribute! Contact Dana at [ddossett@rtwmke.org](mailto:ddossett@rtwmke.org) today to learn more.

Anonymous (3)	Kathleen & John Hickey	Chris Mortensen
George Affeldt	Sarah & Milt Hwang	Frank Mozer
Dr. Mary Beth Alvarez	Michael Johnston	Kate & Ken Muth
Catherine Anderson	Bonnie & Leon Joseph	Dr. David Paris & Derin Bjgustad
Patricia & David Anderson	Patricia Keating Kahn & Chuck Kahn	Lois & Richard Pauls
Laura & Mike Arnow	Brandy Kline & Michael Anderson	Emily & Angie Phillips
Tanya Atkinson	Marie Kohler & Brian Mani	Mary & Ross Read
Bob Balderson	Leslie Kohler	J. Michael Reavis
Donna & Donald Baumgartner	Mary Korkor	Susan Riedel
Liz & Scott Bickley	Pam Kriger	Jodi Ristau
Penny Burton	Sandra Laedtke	Anna & Dan Robbins
Miriam Colton & Holly Rehberg	Laura Lindner	Jennifer Rupp & Richard Chudnow
Margaret Dethloff & Terri Zeh	Joanne Lipo Zovic & Paul Zovic	Molly & Jeff Schissler
Judges Jean & John DiMotto	Marianne & Sheldon Lubar	Carol & Kevin Schuele
George & Sandy Dionisopoulos	Sherry & Rick Lundell	Judith & Bob Scott
Patti & Patrick Doughman	Jane Barclay Mandel & Paul Mandel	Jan Serr & John Shannon
Donna Drosner	Barbara Manger & Bill Lynch	Lois Smith
Sandy Duffy	Donna Martynski	Patricia & Jerry Styberg
Suzan & Jeff Fete	Michele Matthai	Jamie Udelhofen
Virginia Finn & Evan Lenhardt	Mary Jo & Guy McDonald	Julie & David Uihlein
Sarah Ford & Randy Klumb	N. Lynnette McNeely	Elizabeth Weirick
Pamela Frautschi	Vivian Moller	Kim Wynn
Susan & Timothy Frautschi	Lori Morse & Robert Gardenier	Sandra Zingler
Kathy & Stewart Friend		Judy Zwirlein
Molly Gena		
Idy Goodman		
Katie Heil		

## WHAT IS THE GREEN ROOM GROUP?

Green Room Group supporters gain **behind-the scenes** insights on how we harness our artistic and financial resources to create moving theater. Members are also invited to special events like the **First Rehearsal** of each production to hear the cast read the script aloud for the first time and the **Opening Night Reception** to raise a glass with us and mingle with the creative team.

### MEET US IN THE GREEN ROOM!

Contact Dana Dossett, Development Director, at [ddossett@rtwmke.org](mailto:ddossett@rtwmke.org)!

## DONORS

Renaissance Theaterworks thanks the following individuals and organizations for their generous support. Donations listed were received between July 1, 2023 and February 24, 2025. Make a gift today by visiting [rtwmke.org](http://rtwmke.org).

### **\$100,000+**

United Performing Arts Fund

### **\$10,000+**

Laura & Mike Arnow

Donna & Donald Baumgartner

Brico Fund

George & Sandy

Dionisopoulos

Suzan & Jeff Fete

Susan & Timothy Frautschi

Greater Milwaukee Foundation

Herzfeld Foundation

Milwaukee County CAMPAC

J. Michael Reavis

Jodi Ristau

Ruth Arts

Shubert Foundation

Bert L. & Patricia S. Steigleder

Charitable Trust

Julie & David Uihlein

Sandra Zingler

### **\$5,000+**

Anonymous

Bob Balderson

Penny Burton

Chicago Community Trust

Judges Jean & John DiMotto

Ralph Evinrude Foundation,  
Inc.

Idy Goodman

Frieda & William Hunt

Memorial Trust

Greater Milwaukee

Foundation's Judith A.

Keyes Family Fund

Marie Kohler & Brian Mani

Marianne & Sheldon Lubar

Sherry & Rick Lundell

Milwaukee Arts Board

Vivian Moller

Nonprofit Management Fund

Jane Bradley Pettit Foundation

Jan Serr & John Shannon

Wisconsin Arts Board

### **\$1,000+**

Dr. Mary Beth Alvarez

Catherine Anderson

Patricia & David Anderson

Tanya Atkinson

Liz & Scott Bickley

Miriam Colton & Holly Rehberg

Margaret Dethloff & Terri Zeh

Patti & Patrick Doughman

Donna Drosner

Sandy Duffy

Virginia Finn & Evan Lenhardt

Sarah Ford & Randy Klumb

Pamela Frautschi

Kathy & Stewart Friend

Gardner Foundation

Molly Gena

Greater Milwaukee Foundation

Briggs & Stratton Fund

Colton Charitable Fund

Greater Milwaukee Assn. of

Realtors Youth Fnd. Inc

Green Bay Packers Foundation

Heil Family Foundation

Kathleen & John Hickey

Sarah & Milt Hwang

Michael Johnston in honor of

Doug Clemons

Bonnie & Leon Joseph

Patricia Keating Kahn & Chuck

Kahn

Brandy Kline & Michael

Anderson

Leslie Kohler

Mary Korkor

Pam Kriger

Sandra Laedtke

LCM Funds Real Estate LLC

Laura Lindner

Joanne Lipo Zovic & Paul

Zovic

Jane Barclay Mandel & Paul

Mandel

Barbara Manger & Bill Lynch

Donna Martynski

Michele Matthai

Mary Jo & Guy McDonald

Lori Morse & Robert Gardenier

Chris Mortensen

Frank Mozer

Kate & Ken Muth

Charles D. Orgiesen

Foundation

Dr. David Paris & Derin

Bjugstad

Lois & Richard Pauls

Clare M. Peters Charitable

Trust

Emily & Angie Phillips

Phillips Ristau Group at Baird

Anna & Dan Robbins

Mary & Ross Read

Susan Riedel

Jennifer Rupp & Richard

Chudnow

Molly & Jeff Schissler

Carol & Kevin Schuele

Judith & Bob Scott

Lois Smith

Patricia & Jerry Styberg

Jamie Udelhofen

We Energies Foundation

Elizabeth Weirick

Wispact Foundation

Kim Wynn

Judy Zwirlein

### **\$500+**

Erin Anderson

Brenda Andrews & James

Cauley

Liz & Tom Aprill

Daniel D. Blinka

Barbara & William Boles

Jason Buskel & Eric Aprill

Catherine & Mario Costantini

Patricia D'Angelo

Mary Jo & Tom Dempsey

Kathie Eilers & Barry Blackwell

Sally & Al Ferguson

Kirsten & Bill Finn

Laura Gordon

Barbara Haig & Daniel Schley

Margarete & David Harvey

Zoe Higgins

Mary & Mark Hollister

Angela Jacobi

Bett Jacquart

Barbara & Dennis Klein

Juilily Kohler

Diane & James Kuntzelman

## DONORS (cont.)

Joan Lubar & John Crouch  
Dr. Lisa Lipkins  
Lee Marquardt  
Sarah McEneaney & Robert  
Smith  
Mary McCormick & Timothy  
Hawks  
N. Lynnette McNeely  
Leah Murphy  
Jane O'Connell  
Holly & Gregory Orlovski  
Kari Pietsch-Wangard  
Candy & Bruce Pindyck  
Greater Milwaukee Foundation  
Ildy and Skip Poliner Fund  
Jeannine Ruby & Salar Saleh  
Lynn Rix  
Pamela Seccombe  
Janine & Bruce Smith  
Stephanie Stearns & Tim  
Ottman  
Linda & Thomas Streifender  
Michael Sullivan  
Joy Towell  
Terry Tuttle & Michael Murphy  
Tracey Wadsworth  
Mary Wegener  
Gwendolyn & William Werner  
Marilyn White  
Joan Wiegand

### \$50 – \$499

Actors' Equity Foundation  
George Affeldt  
Kathleen & Thomas Alpren  
Libby Amato  
Robert Amsden & Jeanne  
Williams  
Anonymous (4)  
Sofia Ascorbe  
Philip Backe  
Shauna Singh Baldwin  
Mary & Larry Bandor  
Aliza Baran  
Rebecca Bardwell  
Richard Barthel  
Thomas J Basting Sr  
T. Michael Bathke  
Michael George Bauer  
Brian Bauman  
Cindy Benning  
Marta Bianchini  
Amy Biersteker

Brooke J Billick  
Sally Blommer  
Amy & Dylan Bolin  
Julie & William Bonnell  
Pamela Booth & Robert  
Nichols  
Marcie Boucher  
Ann Bowe  
Jeanette Braun  
Jill Broekhuizen  
Marcia Brooks & Edward  
Hammond  
Anne Brower & Jane Earle  
Mike Brown  
Diane & David Buck  
Rick Burbey  
Mary Jo Burgoyne  
Linda & Thomas Burke  
Robin & Mick Burns  
Jim Buskel  
Laurie & Peter Byrne  
Sharon & Mark Cameli  
Bruce H Campbell  
Mary Belle & Thomas Chatton  
Jane & Stephen Chernof  
Gladys Chmiel  
Elizabeth Cichowski  
Alexander Coddington  
Mary Jo & John Coffee  
Flora Coker  
Katie Conley  
Marta A Conlon  
Patricia Contreras  
Eleanor & Michael Cotey  
Lori Craig  
Kathleen Allen Crocker  
Christy D'Angelo  
Betsy Daniels  
Linda & Pat Devitt  
Cynthia Dicamelli  
Margaret Dickson  
Elizabeth & Peter Dietz  
Anne DiMotto  
Jennifer Dobby  
Holly Jean Dobson  
Carol Z. Dolphin  
Kathleen Donius & Paul  
Kosidowski  
Diane & Robert Donohoo  
Dana & Corey Dossett  
Sharon Dossett  
Chip Duncan

Deborah & Michael Duncan  
Sigrid Dynek  
Connie Eastman  
Tina Eickermann  
Rebecca Elon  
John Emanuel  
Cecile & Dennis Engel  
Cody Estle  
Michael Evans  
Linda Even  
James Fergus  
Barbara McMath & Robert  
Ferriday, III  
Judy & James Findling  
Mary Alice Fifer  
Keller & Jeff Fitzsimmons  
Kevin Flaherty  
David Flores  
Mary Fontanazza  
Cheryl Franch  
Patty Francis  
Bette & Richard Frangesch  
Brooke & Craig Frizzell  
Amy & Andrew Funk  
Patricia Gahl & Gregory Polak  
Paula & Ralph Garcia  
Amy L Giampetroni  
Dee Ann Girard  
Natasha Goeller  
Karen Gotwalt & Ronald Reitz  
Stephanie Govin-Matzat  
Sandy & Mark Grady  
Alison Graf  
Will Grant  
Christopher Grenda  
Daryl Grier  
Nancy & Reed Groethe  
Matthew Groth  
Erica Gumieny  
Sheila & Harry Gustafson  
Lyn & Michael Hamilton  
James Hampel  
Amelia Hanks  
Amy Hanson  
Linda Heintz  
Louise Hermsen  
Michelle Herro  
David Hertel  
Mary Hessel  
Cecilia Hillard  
Laura Hirano  
Robert Hirschi



## DONORS (cont.)

Mary Beth Holloway  
Susan Holmes  
Victoria Hudziak  
Darryl Huennekens  
Danielle Ippolito  
Cathy Jakicic  
Jacob Janssen  
Kristine Jensen  
Amanda Johnson  
Karen Johnson & James Toth  
Annie Jurczyk  
Carol Justin & Ed Szopinski  
Diane & Richard Kane  
Maureen Kania  
James Kaplan  
Alyce & Paul Katayama  
Katherine & Vincent Katter  
Judith & William Kay  
Marcella Kearns  
Edward Kelly  
Michele Kenner  
Demaris & Gontran Kenwood  
Kirsten & Andy Kerr  
Donald Kielich  
Maureen Kilmurry  
Richard Knoedler  
Elizabeth Kocol  
Kathi Koenig  
Maureen & Daniel Konkol  
Jeanne Kornkven  
Anne Marie & Terry Krueger  
Konrad Kuchenbach  
Frances Kulutbanis  
Harvey Kurtz & Yvonne Larme  
Charmaine & James LaBelle  
Dr. Katy LaFond  
Dannette & Avrum Lank  
Jennifer LaPorte  
Kersten Larson  
Emily Leick  
Sally Lemke  
Sheri & Lloyd Levin  
Sue & Greg Lochen  
Pat Lombardo  
Lynn Lucius & Richard Taylor  
James Lyon  
Nicole Magnusson  
A.J. Magoon  
Lois Malawsky  
Tara Mallen  
Norman & Sherry Malmon  
Judy Martel

Dr. Lisa Wehr-Maves & Dr.  
Matthew Maves  
Maureen Mcavoy  
Melissa McCord  
LaVerne McCoy  
Renee McCutcheon  
Elaine McDermott  
Mallory McGinty  
Raeleen McMillion  
Cara McMullin  
Debra Melvin  
Sara & Howard Miller  
Wendy Moeller  
Pat & Gary Moldenhauer  
Patricia & Mark Monroe  
James Moore  
Patricia J Moren  
Lisa Mosier & Michael  
Krukowski  
Andrew Muriuki  
Theresa & Bob Muselman  
Nick Narcisi  
Ann Navin  
Donna Neal  
Cathy Nemerovski  
Linda Neubauer  
Jane Nicholson  
Marjorie Nixon  
Christine & James O'Brien  
Sarah Oberhofer  
John Oberwetter  
Jake Oelke  
Kathy & Alan Olsen  
Joyce & Nick Pabst  
Marge Palleon  
Gerry Pas  
Pam Percy  
John Peters  
Janet & Randy Peterson  
Tammy Peyton  
Sara Pffor  
Marjorie Piechowski  
Devon & John Pittman  
Marianne Plaisier & Gordan  
Mortensen  
Kathryn Podmokly  
Susan Potter  
Teresa & Michael Prattke  
Kayla Premeau  
Amanda & Nate Press  
Lynn Preston  
Ellen Purtell

Amy Rabideau Silvers & Joe  
Silvers  
Christine Radiske & Herbert  
Quigley  
Jacqueline Rice  
Carla Roden  
Linda Roethlisberger & Dennis  
Hennessey  
Jinnene Ross  
Susan Sager  
LindaGale Sampson  
Lynne Schade  
Susan & Michael Schall  
Robert Schellhammer &  
Maureen Holt  
Alex Scheurell  
Patrick Schley  
Ted Schulte  
Brooke Schultz  
Rebecca Schultz  
Yvonne Schultz  
Ellen Frieberth Schupper  
Micki Seinfeld  
Pam Shy  
Leonard Sobczak  
Dr. Morton Soifer  
Deborah Staples & David  
Cecsarini  
Shayne P Steliga  
Linda Stephens  
Eileen & George Stone  
Kimberly Stoner & Cory Krivitz  
Sandra Strawn  
Lena Stephenson  
Chase Stoeger  
Anne & Gary Summers  
Tara Swartz  
Carolyn Sweers  
Julie Swenson  
Virginia & John Taucher  
Francesca Tenuta  
Cari Thompson & Tim Falvey  
Tawnie Thompson  
Linda Timm  
Josie Trettin  
Beck Trumbull  
Sheryl Van Haren  
Susan Vetrovsky & Michael  
Goldstone  
Douglas Visvader  
Julia Vosper  
Yvonne Wagner

## DONORS (cont.)

Judge Jeff & Dyan Wagner  
Donna & Jerry Walsh  
Jenny Wanasek & Mark  
Weinberg  
Barbara Wanless  
Margaret & John Ward  
Catherine Washabaugh  
Susan E. Watson  
Phyllis Wax  
Dean Wegner  
Alyce & Russell Weiss  
Marie Weiss  
Dawn Wenzell  
Nathan Wesselowski  
Heather Whitmill  
Margaret Wilber  
Lani Williams & Earl Potter

Maxine Wishner  
Sarah Wong  
Michael Wright & Ray Jivoff  
Sue & Brian Yee  
Christine Yundem  
David Zalewski  
Katrene Zelenovskiy

### IN-KIND DONORS

A Bianchini Experience  
Catering  
Bars & Recreation  
Bartolotta Restaurants  
Cooper's Hawk  
Jason Fassl  
Florentine Opera Company  
Sarah & Milt Hwang  
Herb Kohl Philanthropies

Milwaukee Ballet  
Milwaukee Chamber Theatre  
Milwaukee Symphony  
Orchestra  
Next Act Theatre  
Jayne & Michael Pink  
Potawatomi Hotel & Casino  
Saffron  
Saint Kate  
Skylight Music Theatre  
Sophia Angela Topetztes  
Strelka  
Traveling Lemur Productions,  
LLC  
Julia & David Uihlein

## ABOUT UPAF

Each year, more than 30,000 individuals, corporations and foundations in greater Milwaukee annually support the UPAF annual campaign, making it one of the nation's largest united arts funds. In addition to raising and allocating operating funds, UPAF is enhancing its value to the community, donors and performing arts by serving as a community wide resource for developing the excellence, reputation and impact of our performing arts.



### Established to recognize those who have made an estate or planned gift to Renaissance Theaterworks, Inc.

Your forethought will ensure long-term viability for RTW's unique mission,  
as well as the continuation of our uninterrupted debt-free history.

Legacy gifts can be made through bequests, life insurance, IRAs or other  
planned giving arrangements.

Have you already included Renaissance Theaterworks in your planning?

Please let us know!

**Join Now!**

Interested in learning more?  
Contact Dana Dossett, Development Director at [ddossett@rtwmke.org](mailto:ddossett@rtwmke.org)

# CIRCLE MIRROR TRANSFORMATION

BY ANNIE BAKER

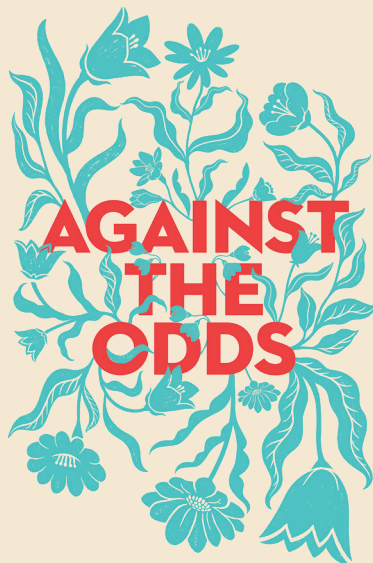
DIRECTED BY CODY ESTLE

APRIL 23 - MAY 18, 2025

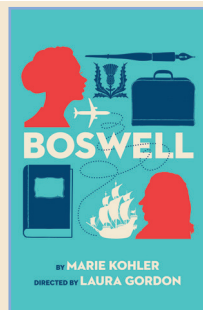
SCAN WITH YOUR PHONE FOR TICKETS!



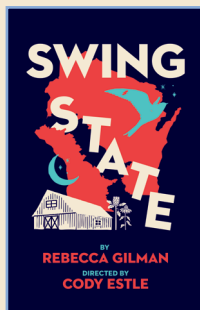
## NEXT ACT THEATRE'S 2025-2026 SEASON



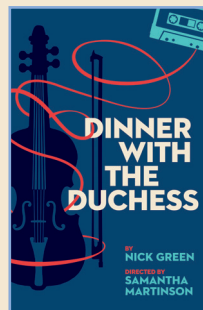
SEPT 10 - OCT 5, 2025



NOV 19 - DEC 14, 2025



FEB 11 - MAR 8, 2026



APR 22 - MAY 17, 2026

SEASON TICKETS NOW ON SALE!  
BUY AT [NEXTACT.ORG](http://NEXTACT.ORG) OR CALL (414) 278-0765

# Br!NK

New Play Festival

May 17 & 18

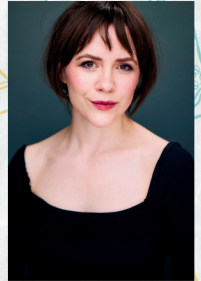
## Featuring

**NAKED TUESDAYS**

by Maria Pretzl &

**GREAT WHITE THRONE**

by Cara Johnston



More information at [rtwmke.org/brink](http://rtwmke.org/brink)

## 2025 - 26 SEASON

OCT 19 - NOV 9

**S W I T Z E R L A N D**

by

Joanna Murray-Smith

JAN 11 - FEB 1

**Cardboard  
Piano**

BY HANSOL JUNG

MAR 22 - APR 12

**Barefoot  
in the  
Park**  
by Neil Simon

**RISK  
IT  
ALL**

