

Raise A Glass to Renaissance: *Twist & Toast*

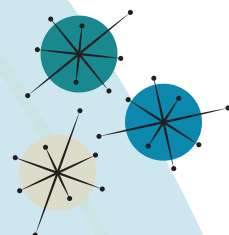
Celebrating with: Pam Kriger and Sandy & George Dionisopoulos
Wed. Aug 27 at 255 S Water St, Milwaukee

RENAISSANCE THEATERWORKS AT A GLANCE:

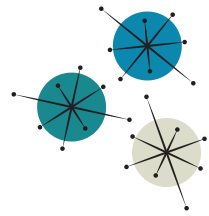
- We are the second-oldest theater company in the country dedicated to gender parity.
- We are entering our 33rd season of vibrant, visceral storytelling and debt-free operations.
- We contribute to the quality of life in Milwaukee by consistently producing artistically excellent, relevant, and thought-provoking theater, created by local artists who are fairly compensated.
- Raise A Glass is our annual fundraising event, bringing together a group of 150+ arts supporters, local business leaders, and community connectors to celebrate and raise the critical funds that keep our mission going strong, despite rising operating costs.

WHAT YOUR SPONSORSHIP DOES:

- Advances the careers of female artists and leaders.
- Engages the greater Milwaukee community in meaningful partnerships.
- Powers outstanding theater created by women, for everyone.



Sponsor Levels and Benefits	Leader of the Pack \$3,500	Rebel with a Cause \$1,200	Doo-Wop Darling \$600
Event Admissions Included	12	4	2
Event Signage & Website Listing	✓	✓	✓
Inclusion in Event Email Blasts	✓	✓	
Social Media Thank You	✓		



Raise A Glass to Renaissance: *Twist & Toast*

Registration may be emailed to Dana Dossett at ddossett@rtwmke.org (preferred) or mailed to 158 N Broadway, Milwaukee, WI 53202. Please allow extra time for mail processing.

Sponsor Level:	
Name (as you would like it to appear in print):	
Contact Name:	
Contact Phone:	
Contact Email:	

This gift is in celebration of: _____ Sandy & George Dionisopoulos _____ Pam Kriger

ATTENDEE INFORMATION:

<p>We will be there! I understand that the tax deductible portion of my sponsorship will be adjusted accordingly.</p> <p>Names & email addresses of guests (if known):</p> <p>_____</p>	
<p>Sorry to miss this!</p> <p>I would like to decline this benefit and make the full value of my sponsorship tax deductible.</p>	

PAYMENT METHOD:

We will mail a check made payable to Renaissance Theaterworks.	
We will complete our sponsorship payment online at rtwmke.org/shows/raise-a-glass/	
Please send an invoice .	

NEXT STEPS:



- Please send any logos (PNG preferred with transparent background) to Maria: mpretzl@rtwmke.org.
- If not provided above, submit all guest names & emails to ddossett@rtwmke.org by Aug. 15.
- Watch for a pre-event email with all the information you and your guests may need.