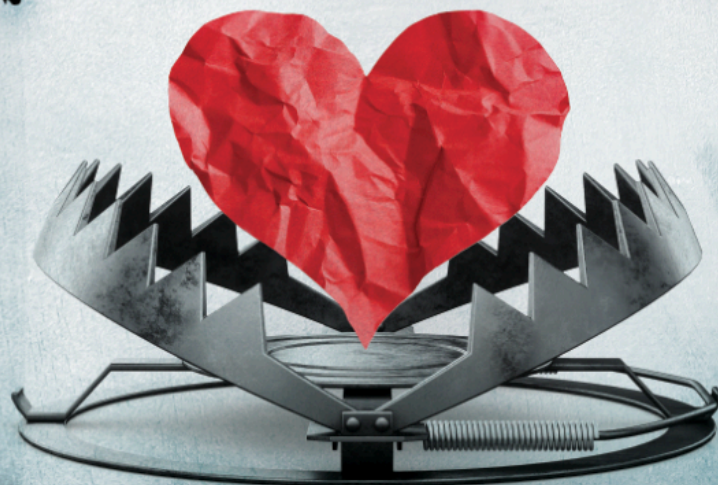


2025-26 SEASON

RISK
IT
ALL



RTW SEASON 25/26

Accessibility Guide

Purchasing Tickets

You may purchase tickets for accessible seats by calling our box office at 414-278-0765 or online at rtwmke.org. Accessible seating is located in ROW A of all 3 sections in the theater. There are no stairs required to access ROW A. For wheeled mobility equipment users: Seats can be removed if you prefer to sit in your mobility device, or you can transfer to a seat and an usher will move your mobility device to a safe location and return it to you after the performance. Please let the box office know your preferences so we can offer you the best theater experience possible.

For patrons wishing to attend an audio described performance, booking tickets in sections 1 or 3 is preferable for the best 'described' experience.

Parking

There are 2 designated disabled parking spaces right in front of the theater, and a drop off spot for patrons requiring closer access. There is also a parking lot available adjacent to the front entrance on nights and weekends, and free street parking on South Water street. If you need additional assistance or options please contact the box office at 414-278-0765.

Trained service animals are welcome in the theater.

As you enter the Theater Building

The entrance to our theater is at street level and the doors have push button access.

The Foyer; Front of House or Lobby

Directly in front, you will find our bar area, and to the right our box office, where tickets can be collected or inquiries made. To the north and south side of the foyer are the public restrooms, each with a separate fully ADA stall. Programs and hard copy audience guides (when applicable) will be available from our ushers, who will also scan your paper tickets, or your electronic tickets.

Inside the Theater, or The House

There are two entrances into the stage area, or the 'house' from the foyer at ground level. We open the house to the audience 30 minutes before the performance or 'curtain up' begins. Ushers will be present to help guide you to your seats, and answer any questions you may have.

The Stage, or Performing Space

In our theater we have what we call a thrust stage. There are rows of seats on either side and at the front. The back of the stage is where the actors will enter from. There will be accessible audience seating for wheelchair users and companion seating at ground level.

ASL Performances

There will be an American Sign language interpreted performance of:

'Switzerland'..... on Thursday the 30th of October at 7.30pm

'Cardboard Piano'.....on Thursday the 22nd of January at 7.30pm

'Barefoot in the Park'.... on Thursday the 2nd of April at 2pm

Hearing Loop

The theater is equipped with an advanced technology Hearing Loop Listening System. The system will broadcast directly to those with T-coil hearing aids. Portable assistive listening devices for conventional listening are also available and may be checked out at the Concessions counter.

Open Captioning

These performances will have open captioning (TTML); timed text markup language, to improve the audio experience for all of our patrons.

'Switzerland'..... Wednesday, the 29th of October at 1.30pm

Saturday the 1st of November at 4pm

'Cardboard Piano'...Wednesday the 21st of January at 1.30pm

Saturday the 30th of January at 4pm

'Barefoot in the Park'....Wednesday the 1st of April at 1.30pm

Saturday the 4th of April at 4pm

Audio Described Performances

Audio Described Performances or Visual Description is a form of narration used to provide information regarding key visual elements in theatrical performances for the benefit of blind and visually impaired patrons.

On arrival at the theater please identify yourself to an RTW staff member. Early arrival is highly recommended to take full advantage of the pre-show description and presentation, which will begin 20 minutes before the beginning of the play.

'Switzerland'.....Friday the 7th of November at 7.30pm

'Cardboard Piano'.....Friday the 30th of January at 7.30pm

'Barefoot in the Park'...Friday the 11th of April at 7.30pm

Sensory Friendly Performances

There will be specially modified and relaxed sensory friendly performances of:

'Switzerland'..... Wednesday the 5th of November at 1.30pm

'Cardboard Piano'...Wednesday the 28th of January at 1.30pm

'Barefoot in the Park'.....Wednesday the 8th of April at 1.30pm

Pay What you Choose, PWYC

There will be a preview performance where patrons can contribute what they choose for the price of admission:

‘Switzerland’.....Friday the 17th of October at 7.30pm

‘Cardboard Piano’.....Friday the 9th of January at 7.30pm

‘Barefoot in the Park’...Friday the 20th of March at 7.30pm